



STOREY COUNTY COMMISSION MEETING

TUESDAY, APRIL 16th, 2013 12:00 P.M.

DISTRICT COURTROOM

26 SOUTH B STREET, VIRGINIA CITY, NEVADA

AGENDA

BILL SJOVANGEN
CHAIRMAN

BILL MADDOX
DISTRICT ATTORNEY

MARSHALL MCBRIDE
VICE-CHAIRMAN

LANCE GILMAN
COMMISSIONER

VANESSA DU FRESNE
CLERK-TREASURER

All items include discussion and possible action to approve, modify, deny, or continue unless marked otherwise.

Note: One or more Commissioners may participate via teleconference.

1. CALL TO ORDER AT 12:00 P.M. CALL TO ORDER CLOSED SESSION AT 12:00 P.M. (Closed meeting pursuant to NRS 288.220(4) for the purpose of conferring with the County's management regarding labor negotiations.)
2. CALL TO ORDER AT 2:00 P.M.
3. PLEDGE OF ALLEGIANCE
4. DISCUSSION/POSSIBLE ACTION: Approval of Agenda for April 16, 2013
5. DISCUSSION/POSSIBLE ACTION: Approval of Minutes for March 19, 2013
6. PUBLIC COMMENT (No Action)

CONSENT AGENDA

(All matters listed under the consent agenda are considered routine, and may be acted upon by the Board of County Commissioners with one action, and without an extensive hearing. Any member of the Board or any citizen may request that an item be taken from the consent agenda, discussed, and acted upon separately during this meeting. The Commission Chair reserves the right to limit the time allotted for each individual to speak.)

7. Claims - For possible action approval of Payroll Check date 03/29/13 for \$345,195.42, 04/12/13 for \$441,143.81 and Accounts Payable date 04/05/13 for \$265,561.37
8. For possible action approval quarterly report for the Virginia City Township Justice Court.
9. For possible action approval of award bid in the amount of \$126,820.55 to Coons Construction, the apparent low bidder for the Storey County Pool Accessibility Upgrades Project (PWP #ST-2013-095) as part of the Community Development Block Grant awarded to Storey County.
10. For possible action approve appointing the firm of David Pringle CPA as outside auditors for the Storey County Audited Statements for the year ended June 30, 2013
11. For possible action approval of Licensing Board First Reading:
 - a. Nevada ICF, LLC - Contractor/1491 Serendipity Court, Sparks
 - b. Complete Electric - Contractor/1655 Marietta Way, Sparks
 - c. Rimrock Drilling, Inc. - Contractor/700 Flanders Road, Reno
 - d. V.C.'s Treasurer Island - General/54 North C Street, Virginia City
 - e. Comstock Movie Studio, LLC dba Three Tickets to Paradise - General/150 North Summit Street, Virginia City
 - f. Trico, LLC - General/655 Peru, TRI
 - g. Arrow Remodeling & Renovation - Contractor/1280 Plumb, Reno
 - h. Momentum Consulting dba Fast Signs of Reno - Contractor/1280 Plumb, Reno
 - i. Burke Roofing, INC. - Contractor/109 Shadow Mountain Drive, Fernley
12. SHERIFF'S OFFICE LICENSING
For possible approval of first reading for cabaret license application for The Roasting House located at 55 North C Street, Virginia City.

END OF CONSENT AGENDA

13. **DISCUSSION (No Action):** Committee/Staff Reports
14. **DISCUSSION/POSSIBLE ACTION:** Dr. Marc Johnson - President of the University of Nevada, Reno regarding any concerns about a merger of leadership positions for UNCE and CABNR/NAES. Dr. Johnson also has expressed a desire to re-connect with each county to build awareness that the University of Nevada, Reno is their university across a number of topics, like agriculture, land management, water resources, mining, ranching, community and business development, etc.
15. **DISCUSSION (No Action):** Update from Maurice Washington of the Northern Nevada Development Authority
16. **DISCUSSION/POSSIBLE ACTION:** Approve resolution 13-372 to recognize April 24, 2013 as "Denim Day" in support of victims of sexual violence.

COMMUNITY DEVELOPMENT AND PLANNING

17. **DISCUSSION/POSSIBLE ACTION:** Special Use Permit No. 2013-004 by the Nature Conservancy (McCarran) Applicant is requesting a special use permit in APN 004-092-62, 004-091-77 and 004-091-78 (approx. T20N, R22E, Sections 28, 39, 32 and 33 MDBM)(39° 33'38"N, 119°32'11"NAD) to alter portions of the existing Truckee River channel and abutting floodplain environment to facilitate flood management, water quality improvement, biodiversity and habitat improvement, noxious weed eradication and recreation.

18. **FOR POSSIBLE ACTION, LICENSING BOARD SECOND READINGS:**

- a. Associated Crane and Oil Field Log - General/235 London, TRI
- b. Thompson Electrical - Contractor/7782 Cerritos Circle, Sparks
- c. Rainbow Restoration - Contractot/1285 Marietta Way, Sparks
- d. H2O4U - General/305 Sugar Hill Drive, Sparks
- e. The House Chambers - General/405 Aspen Drive, Dayton
- f. The Butchers Choice of Nevada - General/2555 Dickerson Rd, Reno

BOARD COMMENT

ADJOURNMENT

NOTICE:

- Anyone interested may request personal notice of the meetings.
- Agenda items must be received in writing by 12:00 noon on the Monday of the week preceding the regular meeting. For information call (775) 847-0969.
- Items may not necessarily be heard in the order that they appear.
- Public Comment will be allowed at the beginning of each meeting (this comment should be limited to matters not on the agenda). Public Comment will also be allowed during each item on the agenda (this comment should be limited to the item on the agenda). Time limits on Public Comment will be at the discretion of the Chairman of the Board. Please limit your comments to three minutes.
- Storey County recognizes the needs and civil rights of all persons regardless of race, color, religion, gender, disability, family status, or nation origin.


Notice to persons with disabilities: Members of the public who are disabled and require special assistance or accommodations at the meeting are requested to notify the Commissioners' Office in writing at PO Box 176, Virginia City, Nevada 89440.

In accordance with Federal law and U.S. Department of agriculture policy, this institution is prohibited from discriminating on the basis of race, color, national origin, sex, religion, age, disability (Not all prohibited bases apply to all programs.) To file a complaint of discrimination write to USDA, Director, Office of civil rights, 1400 Independence avenue, S.W., Washington, D.C. 20250-9410 or call (800) 795-3272 (voice) or 202-6382 (TDD). USDA is an equal opportunity provider, employer, and lender.

The TTY, VCO voice carry over) or HCO hearing carry over) number is 800-326-6868; voice only 800-326-6868. Check the customer Guide section of your telephone book under Services for Individuals with a Hearing or Speech Disability.

CERTIFICATION OF POSTING

I, Vanessa DuFresne, Clerk to the Board of Commissioners, do hereby certify that I posted, or caused to be posted, a copy of this agenda at the following locations on or before April 10, 2013; Virginia City Post Office, Storey County Courthouse, Virginia City Fire Department, Virginia City Highlands Fire Department and Lockwood Fire Department.

By _____
Vanessa DuFresne, Clerk-Treasurer

Minutes: March 19, 2013

*Minutes will be provided once available.

Claims

Rept: PR0510A
 Run: 03/27/13 11:23:19
 Payroll Type: Regular
 Check Date: 03/29/13
 Period-end Date: 03/24/13
 Check/ DD # Emp #/ Ded # Payee
 Check Register

Payroll Groups: 1 2 3 4 5 6 7 8

Amount

Total User Transfer for EFTPS: 43,009.05
 Total Deductor Checks: 71,920.84
 Total Employee Checks: 3,226.48
 Total Employee Direct Deposit: 198,156.48
 Total Employee Deductions Transferred on Dir Dep File: 3,265.77
 Total User Transfer to Deductor: 25,616.80
 Total Disbursed: 345,195.42

Approved by the Storey County Board of Commissioners: _____

CHAIRMAN	COMMISSIONER	COMMISSIONER
COMPTROLLER		
TREASURER		

Rept: PR0510A
Run: 04/10/13 10:23:19

STOREY COUNTY PAYROLL SYSTEM
Check Register

Page 4
PRELIMINARY

Payroll Type: Regular Check Date: 04/12/13 Period-end Date: 04/07/13 Payroll Groups: 1 2 3 4 5 6 7 8

Check/ DD #	Emp #/ Ded #	Payee	Amount
----------------	-----------------	-------	--------

Total User Transfer for EFTPS:			44,862.40
Total Deductor Checks:			161,543.29
Total Employee Checks:			3,226.48
Total Employee Direct Deposit:			202,576.99
Total Employee Deductions Transferred on Dir Dep File:			3,265.77
Total User Transfer to Deductor:			25,668.88
Total Disbursed:			441,143.81

Approved by the Storey County Board of Commissioners: _____

CHAIRMAN	COMMISSIONER	COMMISSIONER
COMPTROLLER	_____	_____
TREASURER	_____	_____

Report No: PB1315
Run Date : 04/05/13
CHECK
NUMBER

STOREY COUNTY
CHECK REGISTER 4/05/13

Page 1

CHECK
TOTAL

AMOUNT

TRANS#

DATE

P/O #

INVOICE DESCRIPTION

75082

ALSCO INC

ST 74 LAUNDRY
ST 74 LAUNDRY
ST 71 LAUNDRY
ST 72 LAUNDRY
ST 74 LAUNDRY
SHOP LAUNDRY
SHOP LAUNDRY-NEW JOE
CH LAUNDRY

4/05/13
4/05/13
4/05/13
4/05/13
4/05/13
4/05/13
4/05/13
4/05/13

64589
64589
64589
64589
64589
64545
64545
64545

8.68
8.68
13.84
8.68
8.68
33.54
116.76
38.89

75083

AMERIGAS PROPANE LP

TAX EXEMPT -.92

4/05/13

64503

132.26

75084

AMERITAS LIFE INS CORP

HEALTH INSURANCE

4/05/13

64543

200.92

75085

ARROYO, AUGGIE

REIMBURSEMENT

4/05/13

64592

200.00

75086

ASSESSOR'S ASSOC OF NEV

SPRING EDUCATION WEEK

4/05/13

64629

95.00

SPRING EDUCATION WEEK

4/05/13

64629

265.00

SPRING EDUCATION WEEK

4/05/13

64629

265.00

75087

B & T SALES & SERVICE INC

FUEL PUMP REPAIR

4/05/13

64546

337.20

75088

BANK OF AMERICA #2704

A

4/05/13

64621

600.00

IPHONE BATTERY

4/05/13

64621

600.00

BATTERY, TAPE, PENS 3/18

4/05/13

64514

79.99

BASE 3/25/13

4/05/13

64514

103.95

HOSE/NOZZLE, JAIL

4/05/13

64514

49.97

WITH STATE OFFICERS

4/05/13

64514

45.47

2/24/13

4/05/13

64514

40.89

2/10/13

4/05/13

64514

300.00

LUNCH ERIC/ANDREW/JAMES

4/05/13

64630

175.71

LKWD SUB ABS PIPE, ELBOW

4/05/13

64630

77.08

STEVE'S PLAQUE

4/05/13

64547

28.25

LUNCH 3/12 CONFERENCE

4/05/13

64547

132.36

LAMP ASSY WT/LT

4/05/13

64547

50.00

PRINTER/INK

4/05/13

64547

55.48

OFFICE SAFE

4/05/13

64547

413.16

OOK PAGES

4/05/13

64621

159.95

LOWES KEYS

4/05/13

64539

660.00

PAPER CONSERVATION

4/05/13

64539

29.96

MEETING

4/05/13

64621

503.55

STANDARDIZATION MARKERS

4/05/13

64598

1,200.00

MARK STAFFORD

4/05/13

64577

10.44

BUREAU LOBBYIST PMT

4/05/13

64514

50.05

2013 CONFERENCE

4/05/13

64514

13.49

GARNISHMENT DISBURSED

4/05/13

64573

76.14

75089

BENNETT LAW PLLC

75090

BERKADIA COMMERCIAL MRTG

75091

BERRY ENTERPRISES

64614

673.00

7,086.12

76.14

673.00

Report No: PB1315
Run Date : 04/05/13
CHECK
NUMBER

STOREY COUNTY
CHECK REGISTER 4/05/13

CHECK
TOTAL

INVOICE DESCRIPTION

P/O #

DATE

TRANS#

AMOUNT

VENDOR

75092	BOARD OF REGENTS (COMPT)		4/05/13	64596	45.00	
75093	BRANDLAB LLC		4/05/13	64596	45.00	3,750.00
75094	BUCKET OF BLOOD SALOON		4/05/13	64596	45.00	2,698.28
75095	BURRELL, SCOTT LEWIS		4/05/13	64596	88.00	4,500.00
75096	CAPITAL FORD INC		4/05/13	64596	88.00	505.00
75097	CAREER CHOICES INC		4/05/13	64596	88.00	119.92
75098	CELCO PARTNERSHIP		4/05/13	64596	88.00	334.80
75099	CERTIFIED FOLDER DISPLAY		4/05/13	64596	44.00	461.40
75100	CITY NATIONAL BANK		4/05/13	64596	6,407.19	8,797.92
75101	COMMUNITY CHEST INC		4/05/13	64596	2,390.73	1,386.53
75102	COMSTOCK CHRONICLE (VC)		4/05/13	64523	5,416.67	5,416.67
75103	COMSTOCK COMMUNITY TV INC		4/05/13	64515	143.00	143.00
75104	CREATIVE CONCEPTS MEDIA +		4/05/13	64599	132.00	132.00
75105	CRESTA, OCTAVIO A		4/05/13	64504	2,390.00	2,390.00
75106	CUNEO, ANNE-MARIE		4/05/13	64496	136.00	136.00
75107	FARMER BROS CO		4/05/13	64505	100.00	100.00
75108	FARR WEST ENGINEERING		4/05/13	64506	52.31	52.31
75109	FERRILGAS LP		4/05/13	64549	300.00	300.00
	ST 172 PROPANE		4/05/13	64605	132.50	
	ST 73 PROPANE		4/05/13	64605	501.09	
	ST 74 PROPANE		4/05/13	64605	89.23	
	ST 71 PROPANE		4/05/13	64605	172.55	
	ST 72 PROPANE		4/05/13	64605	120.13	
	ST 72 RESIDENCE		4/05/13	64605	191.12	
	WTR PLANT		4/05/13	64550	786.36	

CHECK NUMBER	VENDOR	INVOICE DESCRIPTION	P/O #	DATE	TRANS#	AMOUNT	CHECK TOTAL
75110	FIRE PREVENTION ASSOC NV	COURTHOUSE		4/05/13	64550	754.42	
75111	FLYERS ENERGY LLC	COURTHOUSE		4/05/13	64550	160.54	
		100 TOLL RD		4/05/13	64550	772.37	
		WATER PLANT		4/05/13	64550	175.77	
		COURTHOUSE		4/05/13	64550	315.12	4,171.20
		FPAN ANNUAL MEMBERSHIP		4/05/13	64606	25.00	25.00
		PW REG UNLEAD & DIESEL		4/05/13	64551	1,949.73	
		LKWD REG UNLEAD & DIESEL		4/05/13	64551	1,091.90	
		PW REG UNLEAD & DIESEL		4/05/13	64551	1,582.49	
		LKWD REG UNLEAD & DIESEL		4/05/13	64551	963.69	5,587.81
75112	GHUSN, GEORGE	CLEAR REFLECTION/MTL		4/05/13	64607	394.00	394.00
75113	GLOBAL TOWER LLC	UTILITIES		4/05/13	64553	40.00	
		POND PEAK RENT		4/05/13	64553	304.16	344.16
75114	GRAINGER	DOOR CLOSURE		4/05/13	64576	267.98	
		RTN DOOR CLOSURE		4/05/13	64576	267.98-	
		RETRACTABEL DUSTER		4/05/13	64576	21.96	21.96
75115	HEMWASI, RENEE			4/05/13	64560	75.00	75.00
75116	HIGH DESERT MICROIMAGING	RED/UNRED 117905-118215		4/05/13	64538	332.70	332.70
75117	HISTORIC FOURTH WARD SCHO			4/05/13	64532	15,200.00	15,200.00
75118	HOME DEPOT CREDIT SERVICE	SAMPLE COOLER		4/05/13	64574	51.91	
		LED WHITE EMERG LIGHT		4/05/13	64574	99.92	
		SHOP STOCK-		4/05/13	64574	16.85	168.68
75119	HOMEMARD RESIDENTIAL INC	APN 00329411		4/05/13	64626	603.00	603.00
75120	ITI SOURCE LLC	UPGRADE JESSICA		4/05/13	64516	130.88	
		DONNA AND DIANNE		4/05/13	64516	362.84	493.72
75121	JBP LLC	KW TRANSP-REGULATOR		4/05/13	64586	247.54	
		KW- GOLD TOP KIT		4/05/13	64586	372.99	
		KW BEARING		4/05/13	64586	267.77	
		KW FLP KIT		4/05/13	64586	13.19	
		FIRE B71 MIRROR		4/05/13	64586	14.09	
		FIRE B71 BUZZER		4/05/13	64586	24.29	
		KW704 TOGGLE		4/05/13	64586	36.39	976.26
75122	JCG TECHNOLOGIES	ANNUAL SUPPORT		4/05/13	64624	395.00	395.00
75123	JUDGE EDWARD R JOHNSON	BENCH TRIAL		4/05/13	64618	293.10	293.10
75124	KAEMPFER CROWELL RENSHAW	E# 13 CR 00010 1F S FRANK		4/05/13	64619	442.45	442.45
75125	LEND A CHEK	GARNISHMENT DISBURSED		4/05/13	64570	199.19	199.19
75126	LIQUID BLUE EVENTS LLC			4/05/13	64507	1,500.00	1,500.00
75127	LOWTHER, MARGARET	FEE		4/05/13	64526	2,550.00	2,550.00

Report No: PB1315
Run Date : 04/05/13
CHECK
NUMBER

STOREY COUNTY
CHECK REGISTER 4/05/13

VENDOR	INVOICE DESCRIPTION	P/O #	DATE	TRANS#	AMOUNT	CHECK TOTAL
75128 LYON CO COMPTROLLER	SUPPORT		4/05/13	64530	4,357.00	4,357.00
75129 MAATTALA, MARGARAT F			4/05/13	64509	30.00	
			4/05/13	64509	30.00	
			4/05/13	64509	30.00	120.00
75130 MCCARTHY & HOLTHUS LLP	REAL PROPERTY SALE		4/05/13	64557	38,571.00	38,571.00
75131 METRO OFFICE SOLUTIONS IN	ND MISC OFFICE SUPPLIES		4/05/13	64620	208.34	
	ENVELOPES		4/05/13	64578	941.96	
	CREDIT ON ENVELOPES		4/05/13	64628	80.55	
	3 CHAIRS		4/05/13	64625	42.60-	
	4 CHAIRS		4/05/13	64625	567.33	
	WATER		4/05/13	64625	756.44	
	AND AA BATTERIES		4/05/13	64567	10.98	
	PRINT CARTRIDGES		4/05/13	64554	85.86	
75132 MORRIS, ROBERT T			4/05/13	64561	130.12	2,738.98
75133 NC AUTO PARTS	SO BATT. WARR		4/05/13	64579	2,025.00	2,025.00
	FIRE BATT WARR.		4/05/13	64579	179.43-	
	#28288 CRT RADIATOR		4/05/13	64579	254.44-	
	RADIATOR #28288		4/05/13	64579	252.00-	
	STOCK AIR ELEMENT LUBE		4/05/13	64579	252.00	
	STOCK DURAFLOCK		4/05/13	64579	19.39	
	STOCK CAB AIR ELEMENT		4/05/13	64579	29.20	
	STOCK- DIAMOND GRIP		4/05/13	64579	16.70	
	STOCK FULL FLOW LUBE		4/05/13	64579	13.33	
	FIRE B71-DEXRON		4/05/13	64579	9.76	
	FIRE B71 COOLANT ENG		4/05/13	64579	124.32	
	FIRE B71 FULL FLOW LUBE		4/05/13	64579	71.70	
	FIRE B71 TRUCK HOSE SHUT		4/05/13	64579	15.53	
	CH GENERATOR BATT ASM		4/05/13	64579	72.30	
75134 NELSON, LUELLA ELINE			4/05/13	64579	331.70	270.06
75135 NEV COMPTOLLER	STORY CO VS OP ENG		4/05/13	64563	2,514.00	2,514.00
			4/05/13	64622	60.00	
			4/05/13	64622	125.00	
			4/05/13	64622	95.00	
	EE		4/05/13	64622	2,610.00	
	COURT FEE		4/05/13	64622	539.50	3,429.50
75136 NEV DIV OF HEALTH	MT. OYSTER FRY		4/05/13	64501	50.00	50.00
75137 NEV TREASURER	EES		4/05/13	64623	10.00	10.00
75138 NEW WEST DISTRIBUTION INC	ACCT. 00796		4/05/13	64632	2,636.00	
	ACCT. 00796		4/05/13	64632	1,052.00-	1,584.00
75139 NEXTEL OF CALIFORNIA INC	PW-EXTRA PHONE 745-5345		4/05/13	64540	19.98	
	COMM DEVELOPMENT		4/05/13	64540	178.31	
	COMPTROLLER		4/05/13	64540	157.07	
	COMM. SERVICE		4/05/13	64540	410.23	

Report No: P81315
Run Date : 04/05/13
CHECK
NUMBER

STOREY COUNTY
CHECK REGISTER 4/05/13

VENDOR	INVOICE DESCRIPTION	P/O #	DATE	TRANS#	AMOUNT	CHECK TOTAL
75140 OFFICE DEPOT INC	PLANNING COMMISSION		4/05/13	64540	645.46	1,411.05
75141 ON THE SIDE GRAPHICS & SI	OFFICE SUPPLIES		4/05/13	64559	33.00	33.00
75142 OWENS EQUIPMENT SALES	MOUNT MAPS TO BOARD		4/05/13	64502	40.00	40.00
75143 PETRINI, ANGELO D	SOLENOID STR SWEEPER		4/05/13	64580	188.76	188.76
75144 PITNEY BOWES INC	32 AD -14 REFUND = 18 AD		4/05/13	64495	36.00	36.00
75145 PONDEROSA STAMP & ENGRAV	AMB BILLING STAMPS		4/05/13	64617	117.00	117.00
75146 PREMIER ACCESS	HEALTH INSURANCE		4/05/13	64608	72.80	72.80
75147 PRISM-NV, LLC	VMWARE LICENSE		4/05/13	64542	602.10	602.10
75148 PROTECTION DEVICES INC			4/05/13	64517	2,228.36	2,228.36
75149 PUBLIC AGENCY COMPENSATIO	SO FIRE MON		4/05/13	64562	25.00	
75150 PURCELL TIRE & RUBBER CO	ST 75 FIRE MONITOR		4/05/13	64558	50.00	
75151 RADFORD, SANDRA M	FEE		4/05/13	64552	120.00	195.00
75152 RANDY RATHBURN	FIRE E171- EM RD SVC		4/05/13	64531	1,250.00	1,250.00
75153 RAPID SPACE LLC	MARCH 14-27, 2013		4/05/13	64581	812.85	812.85
75154 RAY MORGAN CO INC (CA)	GARNISHMENT DISBURSED		4/05/13	64497	92.50	92.50
75155 RED'S CANDIES	ENCLOSED SPACE TRAINING		4/05/13	64569	281.80	281.80
75156 REINHARDT, JOSEPH J	GIS PLOTTER CN2676-01		4/05/13	64609	950.00	950.00
75157 RENO TAHOE SPECIALTY INC	BC TESTING LUNCH		4/05/13	64518	130.00	130.00
75158 ROCKY MOUNTAIN AMBULANCE	CAPTAIN TESTING		4/05/13	64610	176.00	176.00
75159 SAINT MARYS ARTCENTER INC	BATTALION CHIEF TESTING		4/05/13	64502	750.00	
75160 SAINT MARYS PREFERRED HEA	48 BLK CEM GIN T-SHIRTS		4/05/13	64502	1,250.00	2,000.00
75161 SEDDON, JANA V	INT BULBS/AMBULANCES		4/05/13	64513	314.40	314.40
75162 SIERRA CONTROL SYSTEMS	HEALTH INSURANCE		4/05/13	64515	72.52	72.52
	COBRA		4/05/13	64533	5,700.00	5,700.00
	DISCUSS FLIGHT PLAN		4/05/13	64541	7,145.68	7,629.92
	LOSS OF COMM 5 MILE TANK		4/05/13	64527	484.24	
	CREDITS		4/05/13	64631	26.08	26.08
	CREDITS		4/05/13	64582	745.50	
	VANTAGE POINT TRAINING		4/05/13	64582	39.50-	
	EXTINGUISHER FOR COMM CST		4/05/13	64582	8.75-	
75163 SIERRA FIRE PROTECTION LL			4/05/13	64582	742.50	1,439.75
			4/05/13	64519	69.00	

Report No: PB1315
Run Date : 04/05/13
CHECK
NUMBER

STOREY COUNTY
CHECK REGISTER 4/05/13

Page 6

CHECK
TOTAL
69.00

75164 SIERRA PACIFIC POWER CO

INVOICE DESCRIPTION	P/O #	DATE	TRANS#	AMOUNT
2141 EMPIRE RD - VCH PARK		4/05/13	64583	24.24
100 W SOUTH ST. WTR PLANT		4/05/13	64583	1,293.84
CARSON ST. BALL PARK		4/05/13	64583	48.72
100 TOLL RD		4/05/13	64583	592.53
490 SAM CLEMENS MT PARK		4/05/13	64583	35.18
21 S C UNIT GASLAMP		4/05/13	64537	193.19
531 S C LIGHTS LIGHTS		4/05/13	64537	119.22
205 N E ST VC PARK		4/05/13	64583	49.39
SUTTON ST UNIT		4/05/13	64537	28.84
500 SPANIAL RAVINE ("V")		4/05/13	64537	53.13
S C ST UNIT VC		4/05/13	64537	81.20
S C ST LIGHTS		4/05/13	64537	27.71
SPARKS STREET LIGHTS		4/05/13	64537	60.50
141 N C ST		4/05/13	64537	250.38
26 S B ST COURTHOUSE		4/05/13	64583	1,712.70
2220 6 MILE CANYON SWR		4/05/13	64583	2,720.11
STREET LIGHTS BC 19		4/05/13	64537	824.98
GH STREET LIGHTS BC 20		4/05/13	64537	86.01
176 N C ST LIGHTS LIGHTS		4/05/13	64537	72.19
342 S C LIGHTS LIGHTS		4/05/13	64537	106.59
ST 171 FIREHOUSE		4/05/13	64611	108.13
203 S C ST		4/05/13	64597	107.73
205 S C ST		4/05/13	64597	118.55
JAIL		4/05/13	64597	621.74
ST72 PUMPHOUSE		4/05/13	64611	100.07
ST72 RESIDENCE		4/05/13	64611	140.07
ST72 FIREHOUSE		4/05/13	64611	206.17
ST73 FIREHOUSE		4/05/13	64611	111.19
ST 71 FIREHOUSE		4/05/13	64611	325.06
VC TOURISM COMMISSION		4/05/13	64536	237.54
		4/05/13	64571	94.63
				10,551.53
75165 SILVER STATE BARRICADES		4/05/13	64584	395.49
PARKING LOT STRIPING		4/05/13	64584	186.34
75166 SILVER STATE INDUSTRIES		4/05/13	64584	581.83
75167 SLICK INDUSTRIES LLC DBA		4/05/13	64585	1,645.00
WTR PLNT DESK, CABINET		4/05/13	64508	70.00
75168 SLOAN, RANDOLPH D		4/05/13	64508	70.00
75169 SMITH, MONICA M		4/05/13	64555	580.00
75170 SPALLOONE, DOMINIC J III		4/05/13	64555	580.00
75171 SPEEDITECH LLC		4/05/13	64616	3,307.50
75172 ST CO CLERK		4/05/13	64616	3,307.50
75173 ST CO SENIOR CENTER (VC)		4/05/13	64612	591.15
75174 ST CO SHERIFF		4/05/13	64556	150.00
75175 ST CO WATER SYSTEM		4/05/13	64556	150.00
		4/05/13	64527	5.00
		4/05/13	64525	10,833.33
		4/05/13	64575	429.00
		4/05/13	64535	79.48
		4/05/13	64587	79.48

Report No: PR1315
Run Date : 04/05/13
CHECK
NUMBER

STOREY COUNTY
CHECK REGISTER 4/05/13

VENDOR	INVOICE DESCRIPTION	P/O #	DATE	TRANS#	AMOUNT	CHECK TOTAL
75176	STOREY COUNTY JEEP POSSE					
	LEASE		4/05/13	64587	90.98	
75177	SUN PEAK ENTERPRISES		4/05/13	64587	90.98	
75178	SUNRIDGE SYSTEMS INC		4/05/13	64587	79.48	
75179	SUNSHINE REPORTING SERVIC		4/05/13	64587	79.48	
75180	THYSSENKRUP ELEVATOR		4/05/13	64587	89.27	
75181	TRI GENERAL IMPROVEMENT		4/05/13	64587	79.48	
75182	TRIAL SCIENCE INC		4/05/13	64587	45.24	
75183	UNIFORMITY OF NEVADA LLC		4/05/13	64587	41.76	
75184	UNISOURCE WORLDWIDE INC		4/05/13	64587	44.80	
75185	UNITED ELECTRICAL SER INC		4/05/13	64587	394.97	
75186	VIRGINIA CITY TOURS INC		4/05/13	64587	91.73	
75187	WASHOE COUNTY SENIOR SERV		4/05/13	64587	125.48	
75188	WATERS SEPTIC TANK SV DEA		4/05/13	64587	79.48	
75189	WEDCO INC		4/05/13	64587	34.37	
75190	WESTERN ENVIRONMENTAL LAB		4/05/13	64587	25.90	1,552.36
75191	WESTERN NEVADA SUPPLY CO		4/05/13	64529	2,500.00	2,500.00
75192	WESTNET NEVADA LLC		4/05/13	64499	1,072.00	1,072.00
75193	WOOD, CORLISS		4/05/13	64492	18,100.00	18,100.00
75194	3D CONCRETE INC		4/05/13	64565	1,296.00	1,296.00
	APRIL 2013 - JUNE 2013		4/05/13	64521	640.62	640.62
	1705 PERU -W/S		4/05/13	64604	128.97	
	1705 PERU -IRR		4/05/13	64604	69.31	198.28
	PSYCH EVAL		4/05/13	64564	570.00	570.00
	JAKOB UNIFORM		4/05/13	64613	236.27	236.27
	JANITORIAL SUPPLIES		4/05/13	64588	1,569.94	1,569.94
	COURTHOUSE- CCA GRANT		4/05/13	64493	45,156.00	45,156.00
	MARCH 14-27, 2013		4/05/13	64500	700.00	700.00
	FEB RAINBOW BEND MEALS		4/05/13	64510	1,698.31	1,698.31
	GH SEPTIC		4/05/13	64591	2,100.00	2,100.00
	TRI-LMP HIGHBAY		4/05/13	64593	641.96	
	VIRE, CONNECTOR		4/05/13	64593	217.57	859.53
	BIOCHEM OXYGEN, COLIFORM		4/05/13	64594	206.00	
	ALKALINITY, COLIFORM		4/05/13	64594	145.00	
	COLIFORM		4/05/13	64594	20.00	371.00
	FIRE WT74-GSXT 150		4/05/13	64595	6.72	6.72
	EMAIL SERVER		4/05/13	64522	899.00	899.00
	CHEIF JUDGE OYSTER FRY		4/05/13	64512	32.58	32.58

Report No: PB1315
Run Date : 04/05/13
CHECK
NUMBER

VENDOR

STOREY COUNTY
CHECK REGISTER 4/05/13

INVOICE DESCRIPTION
BASE, DRAIN ROCK

P/O #

TRANS#

DATE

64544

4/05/13

AMOUNT

352.54

Page 8

CHECK
TOTAL

352.54

CHECKS TOTAL 265,561.37

ACKNOWLEDGEMENT OF REVIEW AND AUTHORIZATION

CHECKS TOTAL 265,561.37 CHECK DATE 4/05/13

COMPTROLLER

TREASURER

CHAIRMAN

COMMISSIONER

COMMISSIONER

Justice Court Quarterly Report

Storey County, Nevada

Commission Meeting Agenda Item Request

The Storey County Board of Commissioners has established a policy for placement of items on its meeting agenda. The policy states that all requests must be made in writing and must include all supporting documentation at the time the request is submitted.

The deadline for submitting a request for an item to be placed on the agenda is noon on the Monday of the week preceding the Commissioners' Meeting. *(Items received after the deadline will be placed on the agenda of a subsequent meeting.)*

Date of Meeting: <u>April 16, 2013</u>	Date Request Submitted: <u>April 2, 2013</u>
Agenda Item Requested: <u>Quarterly Report for Jan-March 2013</u>	
This item is intended for: <input checked="" type="checkbox"/> Discussion Only <input type="checkbox"/> Discussion/Possible Action <i>(at the Board's discretion)</i>	
<input type="checkbox"/> Supporting documentation is attached <input type="checkbox"/> No supporting documentation is necessary	
Requested by: <u>Judge Herrington</u> <i>(please print name clearly)</i>	
Address:	
Phone:	Email <i>(optional)</i> :

Please submit this completed form to:

Storey County Clerk's Office
PO Drawer D
Virginia City NV 89440

or FAX to:

Storey County Clerk's Office
(775) 847-0921

----- Fold at Arrows Here and Above to Place in a Window Envelope -----

For Office Use Only		
Date Request Received: <u>4.2.13</u>	Received: <input checked="" type="checkbox"/> In Person <input type="checkbox"/> Via FAX	By: <u>YH</u>
<input checked="" type="checkbox"/> Supporting documentation attached - # of pages <u>10</u>		Meeting date of this item: <u>4.16.13</u>

For additional information, please contact the
Storey County Clerk's Office
(775) 847-0969 or email vdufresne@storeycounty.org

VIRGINIA TOWNSHIP JUSTICE COURT
P. O. BOX 674
VIRGINIA CITY, NV 89440
(775)847-0962

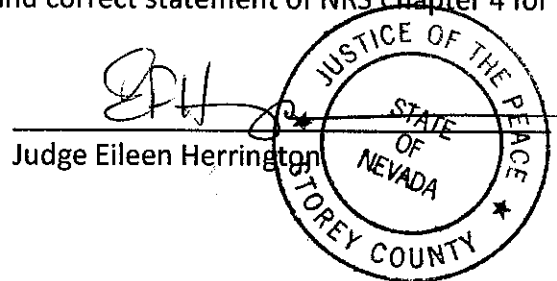
QUARTERLY REPORT

Pursuant to NRS Chapter 4, the following is a report of all civil filing fees received by me as Justice of the Peace of Storey County under the provision of NRS 4.060 for the quarter ending: 31 of March, 2013.

QUARTERLY TOTALS:

1. CIVIL ACTIONS AND EVICTIONS:		
Number of cases filed: 9	CIVIL:	\$827.00
2. SMALL CLAIMS ACTION:		
Number of Cases filed: 5	SMALL CLAIMS:	\$225.00
3. WEDDINGS:		
Number performed: 10	WEDDINGS:	\$ 50.00
	(No Gratuities)	
4. BOND PROCESSING FEES: 9		
Number of Bond Fees	FILE/EXONERATE BAIL:	\$ 180.00
5. RECORD SEARCHES/ COPY FEES 200(est)	SEARCHES /FEES:	\$1,282.00
GRAND TOTAL: 233(est)	GRAND TOTAL:	\$2,681.00

I, Eileen Herrington, Justice of the Peace of Virginia Township/Storey County, Nevada, do hereby certify that to the best of my knowledge and belief, the foregoing is a full, true and correct statement of NRS Chapter 4 for the quarter above-noted.



SUBSCRIBED and SWORN to before me
This 2 day of April 2013.


JUSTICE COURT CLERK

EOM JAN 2013

11,853.80

Disbursed Total

<u>Account</u>	<u>Payee Name</u>	<u>Check Number</u>	<u>Check Status Code</u>	<u>Disbursed Amount</u>	<u>Number of Cases</u>
1F AA FEE - STATE (AOC)	NEVADA STATE CONTROLLER	N/A	N/A	2,855.00	77
170-000-34206					
1F AA FEE - JUSTICE/187-000-35104	VIRGINIA TOWNSHIP JUSTICE COURT	N/A	N/A	572.00	75
1F AA FEE - JUVENILE/001-000-35103	STOREY COUNTY TREASURER	N/A	N/A	162.00	75
1F AA FEE - STATE (GENERAL)/170-000-35114	NEVADA STATE CONTROLLER	N/A	N/A	191.00	35
1F BOND PROCESSING FEE - COUNTY/001-000-34204	STOREY COUNTY TREASURER	N/A	N/A	100.00	5
1F CIVIL FEES/001-000-34204	STOREY COUNTY TREASURER	N/A	N/A	147.00	2
1F FINE - COUNTY/210-000-35109	STOREY COUNTY TREASURER	N/A	N/A	5,929.00	84
1F COURT FACILITY FEE/001-000-35111	VIRGINIA TOWNSHIP JUSTICE COURT	N/A	N/A	745.00	72
1F MARRIAGE FEE/170-000-34212	NEVADA STATE TREASURER	N/A	N/A	25.00	0
1F OVERPAYMENTS TO COUNTY/210-000-35109	STOREY COUNTY TREASURER	N/A	N/A	1.80	2
1F RECORDS SEARCH/001-000-34204	STOREY COUNTY TREASURER	N/A	N/A	350.00	0
1F SPECIALTY COURT FEE (MISD)/170-000-34217	NEVADA STATE CONTROLLER	N/A	N/A	524.00	72
1F SMALL CLAIMS FEES/001-000-34204	STOREY COUNTY TREASURER	N/A	N/A	150.00	2
1F CENSUS FEE/170-000-34201	STOREY COUNTY TREASURER	N/A	N/A	2.00	2
1F BOND FILING FEE VICTIM OF CRIMES/170-000-35108	NEVADA STATE CONTROLLER	N/A	N/A	100.00	5

*** End of Report ***

EOM FOR FEB 2013

Disbursed Total

<u>Account</u>	<u>Payee Name</u>	<u>Check Number</u>	<u>Check Status Code</u>	<u>Disbursed Amount</u>	<u>Number of Cases</u>
1F AA FEE - STATE (AOC)	NEVADA STATE CONTROLLER	N/A	N/A	2,334.00	67
170-000-34206					
1F AA FEE - JUSTICE/187-000-35104	VIRGINIA TOWNSHIP JUSTICE COURT	N/A	N/A	448.00	61
1F AA FEE - JUVENILE/001-000-35103	STOREY COUNTY TREASURER	N/A	N/A	128.00	61
1F AA FEE - STATE (GENERAL)/170-000-35114	NEVADA STATE CONTROLLER	N/A	N/A	95.00	20
1F ATTORNEY REIMBURSEMENT	STOREY COUNTY TREASURER	N/A	N/A	300.00	3
FEE/001-000-34245					
1F BOND PROCESSING FEE - COUNTY/001-000-34204	STOREY COUNTY TREASURER	N/A	N/A	20.00	1
1F CIVIL FEES/001-000-34204	STOREY COUNTY TREASURER	N/A	N/A	259.00	3
1F CHEMICAL ANALYSIS	STOREY COUNTY TREASURER	N/A	N/A	146.00	4
FEE/001-000-35101					
1F COPY FEES/001-000-34204	STOREY COUNTY TREASURER	N/A	N/A	15.60	0
1F FINE - STATE OF NEVADA/170-000-34214	NEVADA STATE CONTROLLER	N/A	N/A	400.00	1
1F FINE - COUNTY/210-000-35109	STOREY COUNTY TREASURER	N/A	N/A	7,111.00	67
1F COURT FACILITY FEE/001-000-35111	VIRGINIA TOWNSHIP JUSTICE COURT	N/A	N/A	615.00	60
1F MARRIAGE FEE/170-000-34212	NEVADA STATE TREASURER	N/A	N/A	15.00	0
1F OVERPAYMENTS TO COUNTY/210-000-35109	STOREY COUNTY TREASURER	N/A	N/A	1.00	1
1F RECORDS SEARCH/001-000-34204	STOREY COUNTY TREASURER	N/A	N/A	416.00	0
1F SPECIALTY COURT FEE (MISD)/170-000-34217	NEVADA STATE CONTROLLER	N/A	N/A	433.00	60
1F CENSUS FEE/170-000-34201	STOREY COUNTY TREASURER	N/A	N/A	5.00	3
1F BOND FILING FEE VICTIM OF CRIMES/170-000-35108	NEVADA STATE CONTROLLER	N/A	N/A	20.00	1

*** End of Report ***

EOM FOR MARCH 2013

Disbursed Total

13,998.50

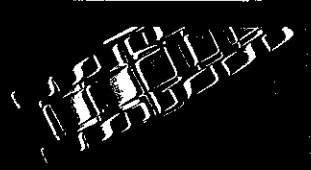
<u>Account</u>	<u>Payee Name</u>	<u>Check Number</u>	<u>Check Status Code</u>	<u>Disbursed Amount</u>	<u>Number of Cases</u>
1F AA FEE - STATE (AOC)	NEVADA STATE CONTROLLER	N/A	N/A	2,610.00	74
170-000-34206					
1F AA FEE - JUSTICE/187-000-35104	VIRGINIA TOWNSHIP JUSTICE COURT	N/A	N/A	525.00	67
1F AA FEE - JUVENILE/001-000-35103	STOREY COUNTY TREASURER	N/A	N/A	150.00	67
1F AA FEE - STATE	NEVADA STATE CONTROLLER	N/A	N/A	95.00	17
(GENERAL)/170-000-35114					
1F ATTORNEY REIMBURSEMENT	STOREY COUNTY TREASURER	N/A	N/A	630.00	1
FEE/001-000-34245					
1F BOND PROCESSING FEE -	STOREY COUNTY TREASURER	N/A	N/A	60.00	3
COUNTY/001-000-34204					
1F CIVIL FEES/001-000-34204	STOREY COUNTY TREASURER	N/A	N/A	421.00	4
1F CHEMICAL ANALYSIS	STOREY COUNTY TREASURER	N/A	N/A	94.00	2
FEE/001-000-35101					
1F FINE - STATE OF	NEVADA STATE CONTROLLER	N/A	N/A	125.00	1
NEVADA/170-000-34214					
1F FINE - COUNTY/210-000-35109	STOREY COUNTY TREASURER	N/A	N/A	7,201.00	82
1F COURT FACILITY FEE/001-000-35111	VIRGINIA TOWNSHIP JUSTICE COURT	N/A	N/A	760.00	69
1F MARRIAGE FEE/170-000-34212	NEVADA STATE TREASURER	N/A	N/A	10.00	0
1F OVERPAYMENTS TO	STOREY COUNTY TREASURER	N/A	N/A	4.00	2
COUNTY/210-000-35109					
1F RECORDS SEARCH/001-000-34204	STOREY COUNTY TREASURER	N/A	N/A	633.00	0
1F SPECIALTY COURT FEE	NEVADA STATE CONTROLLER	N/A	N/A	539.50	71
(MISD)/170-000-34217					
1F SMALL CLAIMS FEES/001-000-34204	STOREY COUNTY TREASURER	N/A	N/A	75.00	3
1F CENSUS FEE/170-000-34201	STOREY COUNTY TREASURER	N/A	N/A	6.00	6
1F BOND FILING FEE VICTIM OF	NEVADA STATE CONTROLLER	N/A	N/A	60.00	3
CRIMES/170-000-35108					

*** End of Report ***

COMMUNITY SERVICE HOURS QUARTERLY REPORT
January, February and March 2013

Participant name	JANUARY	FEBRUARY	MARCH
McBride, Blair	NO	NO	YES

	Couple Wed	Date	Lic #	County	Fee
EFH	Stephens, Shane L Graham, Wendy	01/09/13	020778	SC	50 -
EFH	Hedden, Don Wayne Reiswig, Cynthia Anne	01/25/13	HA13-349	WC	50 -
EFH	Daigle, Albert James McCabe, Aurora C	02/14/13	070782	SC	50 -
EFH	McKinzie, Mike Martin Barnam, Elisabeth Dawn	02/20/13	020785	SC	50 -
EFH	Beeler, John Robert Brandon Seeley, Sharry Marie	02/26/13	070787	SC	50 -
EFH	Kemp, Dalton Leroy Hubred, Andrea Renee	03/13/13	020790	SC	50 -
EFH	Hall, Roger Chavez, Paula	03/18/13	020792	SC	50 -
EFH	Tighe, Kevin Russell Graham, Kristina Ann	03/30/13	020795	SC	50 -



Bid Approval

Vanessa Dufresne

From: Cherie Nevin
Sent: Monday, April 08, 2013 11:04 AM
To: Vanessa Dufresne
Cc: Pat Whitten; Mike Nevin (mnevin@storeycounty.org); Jennifer McCain
Subject: 04.16.13 Commission Agenda Item Request- Pool Project
Attachments: CDBG Pool Bid Agenda Request 04.16.13.pdf

Importance: High

Good Morning-

Please find attached an Agenda Request for the April 16, 2013 Commission Meeting. This item is for the award of the bid for the Pool ADA Upgrade Project. This item should appear under the Consent Agenda. Please let me know that you received this and if you have any questions.

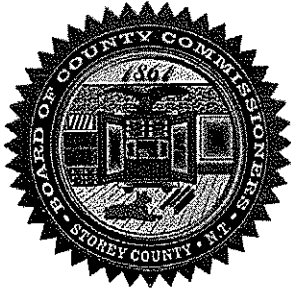
Thank You!

Wishing you the best,
Cherie M. Nevin
Grants & Emergency Management Coordinator
Storey County, Nevada
P.O. Box 7 . 141 North C Street - Virginia City, Nevada 89440
Phone: 775-847-0986 | Cell: 775-230-1474
cnevin@storeycounty.org

Storey County is an Equal Opportunity Provider

This email and any files transmitted with it are confidential and intended solely for the use of the individual or entity to whom they are addressed. This message contains confidential information and is intended only for the individual named. If you are not the named addressee you should not disseminate, distribute or copy this e-mail. Please notify the sender immediately by e-mail if you have received this e-mail by mistake and delete this e-mail from your system. If you are not the intended recipient you are notified that disclosing, copying, distributing or taking any action in reliance on the contents of this information is strictly prohibited.

Please consider our environment before printing this email.



STOREY COUNTY
Emergency Management & Grants
141 North C Street, PO Box 7
Virginia City, NV 89440
Phone (775) 847-0986 * Fax (775) 847-1105

LETTER OF TRANSMITTAL

To: Vanessa DuFresne Storey County Clerk/Treasurer	From: Cherie Nevin
Date: 4/8/2013 11:13 AM	Re: April 16, 2013 Commission Meeting Agenda Item Request

Vanessa,

Please add the following item to the Storey County Commissioners Meeting Agenda for April 16, 2013. This item will go under the Consent Agenda for and Item for Discussion/Possible Action.

Award bid in the amount of \$126,820.55 to Coons Construction, the apparent low bidder for the Storey County Pool Accessibility Upgrades Project (PWP #ST-2013-095) as part of the Community Development Block Grant awarded to Storey County.

I have attached the bid form for this project. We are opting for the Alternate B Deduct. The initial bid was significantly over budget so we reduced the scope of the overall project and utilized value engineering ideas to reduce the cost. The bid amount includes the construction the new free standing ADA/family restroom/shower room complete. Please note that this project is being funded through a Community Development Block Grant.

Please feel free to contact me should you have any questions or need anything else.

Thank you!
Cherie Nevin
Grants & Emergency Management Coordinator

**SECTION 00300
BID FORM**

To: Storey County
26 South B Street
Virginia City, NV 89440

Project: Storey County Pool Accessibility Upgrades Project
107 E. Carson Street
Virginia City, NV 89440
MC Project #11411; PWP-ST-2013-095

Submitted by: Coons Construction LLC Date: 4-4-13
(full name of Contractor)

P.O. Box 1460 Dayton NV 89403 775-246-1660 775-246-1669
(address) (phone) (fax)

1. OFFER:

Having examined the place of the Work, and having become thoroughly familiar with local conditions affecting the cost and performance of the Work and with all requirements of the Contract Documents and related Addenda, hereby purports and agrees to provide all labor and materials required to construct and complete the Work in accordance with the Contract Documents and Addenda in the following amounts for contract Work scope as specified in Section 1012 - Contract Work Scope Descriptions.

Base Bid: Contract which this proposal is based as set forth in
- Contract Work Scope Descriptions, Section 01012

(Please write out the Base Bid amount in words and numbers)

One hundred thirty thousand eight hundred seventy
dollars and fifty five cents.

DOLLARS (\$ 130,870.55)

In lawful money of the United States of America.

Alternates:	Description	Add/Deduct
A.	<u>Toilet compartments, Shower compartments</u> ^{lockers and benches}	<u>\$ 3,861.40</u> Deduct
B.	<u>Mill Work and Counters</u>	<u>\$ 4,050.00</u> Deduct

2. All sums provided are to be in lawful money of the United States of America. We have included herewith, the required security deposit as required by the Instruction to Bidders.

3. All applicable federal, State of Nevada, and Storey County taxes are included in the Bid Sum.

4. ACCEPTANCE

Offer(s) shall be open to acceptance and irrevocable for sixty (60) days from the bid opening date. If Bid(s) are accepted by the Owner within the time period stated above, we will:

Execute the Agreement within ten (10) days of date of the Notice of Award.

Furnish the required insurance certificates within ten (10) days of date of the Notice of Award.

Commence Work on date to be stated in the Notice to Proceed.

5. CONTRACT TIME

If this Bid is accepted, we will complete the Work in the specified calendar days, (reference Section 00100, Paragraph 2.4).

6. ADDENDA

The following Addenda have been received. The modifications to the Bid Documents noted therein have been considered and all costs thereto are included in the Bid Sum(s).

Addenda # NA Dated _____ Addenda # _____ Dated _____

Addenda # NA Dated _____ Addenda # _____ Dated _____

7. ADDITIONAL BID ENCLOSURES

The following documents are completed, signed and attached.

- A. Section 00430 - Subcontractors Exceeding 5% Listing.
- B. Section 00480 - Form of Non-Collusive Affidavit.
- C. Certificate of Eligibility for Bidder's Preference, if applicable.
A COPY OF CONTRACTOR'S "CERTIFICATE" of eligibility issued by the State of Nevada Contractors' Board as proof of Bidder's compliance with the provisions of N.R.S. 338.147 must be submitted with his/her bid for the preference to be considered. This Statute does not apply to projects expected to cost less than \$250,000.
- D. Qualification Information - Proof of five years experience and a copy of your current Contractors License as noted in Section 00100 5.1 B.
- E. Letter from your Surety Company acknowledging bond ability and bonding capacity status for this project.
- F. A Bid Bond, by a surety company licensed to do business in the State of Nevada; or Certified Check, in the name of the Storey County (Owner), in a sum no less than five percent (5%) of the Bid Sum.
- G. Certification of bidder/contractor regarding equal employment opportunity.
- H. Certification of proposed subcontractor regarding equal employment opportunity.
- I. Lobbying assurances-bidder/main contractor.
- J. Lobbying assurances-subcontractor.
- K. Certification of contractor or subcontractor regarding debarment, suspension, ineligibility or voluntary exclusion.
- L. Certification of proposed contractor regarding section 3 and segregated facilities.

8. BID OPENING

The undersigned consents that the Bids may be opened publicly on the date, time and place set by the Owner.

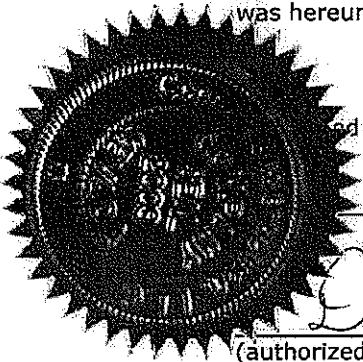
9. BID FORM SIGNATURE(S)

Comply with requirements of Section 00100, Article 7.3.

The Corporate Seal of

Coons Construction LLC
(Bidder - please print the full name of your Proprietorship, Partnership, or Corporation)

was hereunto affixed in the presence of:



and signing officer

Donald A. Coons
(authorized signing officer)

Managing Member
(title)

If the Bid is a joint venture or partnership, add additional forms of execution for each member of the joint venture in the appropriate form or forms as above.

END OF SECTION

Appointment of Outside Auditor

Vanessa Dufresne

From: Hugh Gallagher
Sent: Monday, April 08, 2013 1:50 PM
To: Vanessa Dufresne

Please put the following discussion/ action on the agenda for the next Commissioner Meeting.

Discussion/Action appointing the firm of David Pringle CPA as outside auditors for the Storey County Audited Statements for the year ended June 30, 2013



Hugh Gallagher
Storey County Comptroller
PO BOX 432
Virginia City, NV 89440

Office: 775-847-1006
Cell: 775-291-4508
Fax: 775-847-1151

Storey County is an Equal Opportunity Provider

Business Licenses Approval

Storey County Community Development

Business Licensing



P O Box 526 • Virginia City NV 89440 • (775) 847-0966 • Fax (775) 847-0935 • buslic@storeycounty.org

To: Vanessa DuFresne, Clerk's Office
Pat Whitten, County Manager

8 April 2013
Via email

Please add the following item(s) to the **April 16, 2013**, COMMISSIONERS Agenda:

LICENSING BOARD

FIRST READINGS:

- A. NEVADA ICF, LLC – Contractor / 1491 Serendipity Court ~ Sparks
- B. COMPLETE ELECTRIC – Contractor / 1655 Marietta Way ~ Sparks
- C. RIMROCK DRILLING, INC. – Contractor / 700 Flanders Road ~ Reno
- D. V.C.'s TREASURE ISLAND – General / 54 North C Street VC
- E. COMSTOCK MOVIE STUDIO, LLC dba THREE TICKETS TO PARADISE – General
150 North Summit Street VC
- F. TRICO, LLC – General / 655 Peru TRI
- G. ARROW REMODELING & RENOVATION – Contractor / 2889 East Valley Road ~ Minden
- H. MOMENTUM CONSULTING dba FAST SIGNS OF RENO – Contractor / 1280 Plumb ~ Reno
- I. BURKE ROOFING, INC. – Contractor / 109 Shadow Mountain Drive ~ Fernley

LICENSING BOARD

SECOND READINGS:

- A. ASSOCIATED CRANE AND OIL FIELD LOG – General / 235 London TRI
- B. THOMPSON ELECTRIC – Contractor / 7782 Cerritos Circle ~ Sparks
- C. RAINBOW RESTORATION – Contractor / 1285 Marietta Way ~ Sparks
- D. H2O4U - General / 305 Sugar Hill Drive ~ Sparks
- E. THE HOUSE CHARMERS – General / 405 Aspen Drive ~ Dayton
- F. THE BUTCHERS CHOICE OF NEVADA- General / 2555 Dickerson Rd, ~ Reno

Inspection Required

ec: Shannon Gardner, Building Dept.
Austin Osborne, Planning Dept.
Dean Haymore, Economic Dev.

Gary Hames, Fire Dept.
Patty Blakely, Fire Dept.
Assessor's Office

Sheriff's Office

Sheriff Licenses Approval

Storey County, Nevada

Commissioners' Meeting Agenda Item Request

The Storey County Board of Commissioners has established a policy for placement of items on its meeting agendas. This policy states that all requests must be made in writing, and must include all supporting documentation at the time the request is submitted.

The deadline for submitting a request for an item to be placed on the agenda is noon on the Monday of the week preceding the Commissioners' Meeting. *(Items received after the deadline will be placed on the agenda of a subsequent meeting.)*

Date of Meeting: 04-08-13	Date Request Submitted: 04-05-13
Agenda Item Requested: __ Cabaret license for, The Roasting House, located at 55 North C. st	
This item is intended for: <input checked="" type="checkbox"/> Discussion Only <input type="checkbox"/> Discussion and Action <i>(at the Board's discretion)</i>	
<input type="checkbox"/> Supporting documentation is attached <input type="checkbox"/> No supporting documentation is necessary	
Requested by: Melissa Field @ SCSO _____ <i>(please print name clearly)</i>	
Address: 205 S. C st	
Phone: 775-847-0959	Email <i>(optional)</i> :

Please submit this completed form to:

Storey County Clerk's Office
PO Drawer D
Virginia City NV 89440

or FAX to:

Storey County Clerk's Office
(775) 847-0921

----- Fold at Arrows Here and Above to Place in a Window Envelope -----

For Office Use Only		
Date Request Received:	Received: <input type="checkbox"/> In Person <input type="checkbox"/> Via FAX	By:
<input type="checkbox"/> Supporting documentation attached - # of pages _____		Meeting date of this item:

For additional information, please contact the
Storey County Clerk's Office
(775) 847-0969 or email vdixon@storeycounty.org

Presentation from Dr. Marc Johnson

Pat Whitten

From: Janet Sanderson <jsanderson@unr.edu>
Sent: Wednesday, March 27, 2013 2:03 PM
To: Pat Whitten
Subject: Storey County Commissioner Meeting for April 16
Attachments: UNCE CABNR Proposal Provost 021513.pdf

Dear Mr. Whitten,

Thank you so much for helping with President Johnson's visit to the Storey County Commissioner's meeting on April 16 at 2:00. I have attached a 3 page letter the our Provost wrote regarding the University Cooperative Extension and College of Agriculture, Biotechnology & Natural Resources proposal.

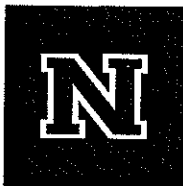
I have also included below a short explanation that I have sent with the agenda request that helps explain why he would like to speak with them.

Please let me know if you have questions or concerns and I know the President is looking forward to attending the Commissioners meeting.

Janet

President Johnson would just appreciate the opportunity to have a conversation with the Storey County Commissioners about any concerns they have about our merger of leadership positions for UNCE and CABNR/NAES. He would like to discuss the University of Nevada, Reno's purpose in this. The President really just needs to know their concerns so they can be addressed in any implementation. He wants to be responsive to County concerns and wants to re-connect with each county to build awareness that the University of Nevada, Reno is their university across a number of topics, like agriculture, land management, water resources, mining, ranching, community and business development, etc.

Janet Sanderson
Assistant to the President
President's Office/ MS 0001
University of Nevada, Reno
775-784-4805
jsanderson@unr.edu



University of Nevada, Reno

15 February, 2013

Kevin R. Carman
Executive Vice President & Provost

To: David Zeh
Chair, UNR Faculty Senate

From: Kevin R. Carman
Executive Vice President and Provost

Re: Proposed Organizational Structure for CABNR and UNCE Leadership

In October of 2012, at the request of President Johnson, Provost Hardy appointed a committee consisting of four CABNR and four UNCE faculty members to explore models for organizing CABNR and UNCE under a single administrator. A professional facilitator was hired to work with the committee. On February 1, 2013, the committee submitted their report to me and to President Johnson. I forwarded an electronic copy of the report to you on February 5, 2013.

Since receiving the report, I have considered carefully the recommendations contained therein. I have also examined other documents related to the two units and have posed questions to colleagues to better understand the context as I formulated a proposal. Below I summarize my vision for the new organizational structure; I would welcome input from the Faculty Senate. Please be advised that President Johnson and I discussed the essential elements of the new organizational structure with NFA representatives, and that I will be meeting with CABNR and UNCE leadership to discuss the organizational structure.

It is evident from the report that a wide range of administrative models are employed by Land Grant universities as it relates to the administrative relationship between extension programs and colleges of agriculture. Three out of nine universities with state agricultural GDP's < \$0.5 billion (Nevada is in this group) have their extension programs under a college of agriculture, while six extension programs are administered separately from agriculture. Nationwide, approximately half (22) of Land Grant universities have extension programs that operate within a college of agriculture. We are faced with the challenge of determining a model that will best serve UNR and the citizens of Nevada.

While the committee did not reach a consensus on a particular model, they presented several (6) options and listed advantages, disadvantages, and challenges with each model. Four of the models involved versions of a structure that included a single Dean or Dean/Director. Two models included a Vice Provost for Outreach and Engagement that would report directly to the EVP and Provost and envisions UNCE and CABNR being administered independently. The latter two models were developed by UNCE committee members but apparently were not evaluated by CABNR committee members or discussed by the entire committee. The concluding remarks of the committee report indicated that CABNR faculty are "apathetic" to the proposed models, but that the single-dean model "may have potential benefits." The report indicates that UNCE faculty are less sanguine about the concept of bringing CABNR and UNCE under one administrative umbrella, and they have concerns about issues such as promotion and tenure, budgetary integrity, and retaining their mission identity.

Office of the Provost
Clark Administration, Room 110
University of Nevada, Reno/0005
Reno, Nevada 89557-0005
(775) 784-1740 main
(775) 784-6220 fax
<http://www.unr.edu/provost>

I wish to state clearly that UNCE is a critical component of and a tremendous conduit for the broad outreach mission of UNR. Any organizational structure must assure that UNCE's outreach mission be preserved and enhanced.

The structure that I envision is very similar to that proposed in Model 2. A single individual would have administrative responsibility for CABNR and UNCE, and would hold the dual title of Dean of CABNR and Director of UNCE and the Nevada Agricultural Experiment Station (NAES). Three Associate Deans would report to the Dean/Director. One Associate Dean would be responsible for academic programs in CABNR, one would hold the additional title of Associate Director of the NAES, and one would hold the additional title of Associate Director for UNCE. Model 2 proposes that the Associate Dean/Associate Director for UNCE would serve as a liaison to the Colleges of Education and DHS. I strongly support the notion the Associate Dean/Associate Director for UNCE should be a liaison to UNR academic programs and appreciate that UNCE has strong ties to Education and DHS. However, I do not feel that the liaison scope should be explicitly limited to Education and DHS. I therefore propose that the Associate Dean/Associate Director for UNCE be specifically charged with being a liaison with the entire UNR community for the promotion of strategic, synergistic outreach programs. As a starting point, fiscal/HR staff that currently serve UNCE and CABNR (including the NAES) would continue to do so. However, the Dean/Director may recognize organizational efficiencies by restructuring staff, and s/he would have authority to do so. Any such organizational changes should preserve and enhance the missions of UNCE and CABNR (including the NAES).

Several points of concern were expressed in the report, for which I offer responses as follows:

- (1) **Need for a new name.** Under the proposed new organizational structure, a single individual would hold the title of Dean of CABNR and Director of UNCE and the NAES. The new organization structure would not require a new name as both CABNR (including NAES) and UNCE would retain all essential elements of their current identity (some specifics below).
- (2) **Integrity and identity of CABNR and UNCE.** As noted above, the proposed organizational model would not alter the integrity or identity of UNCE or CABNR. However, the two programs would be under the leadership of a single administrator who would hold the dual title of Dean/Director.
- (3) **Bylaws.** The new organizational structure need not require new bylaws as both CABNR and UNCE would maintain their identity and structure.
- (4) **Promotion & Tenure.** Current policies and practices for promotion and tenure for CABNR and UNCE would continue to be relevant under the new structure. There should not be a need to modify P&T criteria or policies.
- (5) **Budgets.** Current budgets of CABNR and UNCE would not be altered. UNCE funds would be used only to support the UNCE mission and CABNR funds will be used only to support the CABNR mission. Further, this new organizational structure would be revenue neutral; i.e., current budgets will remain intact.
- (6) There was a comment that "UNCE faculty in community development and personal and family development would lose their academic home in this model." This concern is apparently based on the assumption that CABNR and UNCE would be merged into a single program. That is not what we propose, so this should not be a concern.
- (7) **5-year review.** The report recommended that the new organizational structure be reviewed in five years. I support that recommendation.
- (8) **Advisory councils.** CABNR and UNCE would have separate advisory councils, as they do now.
- (9) **Split appointments.** The proposed new organizational structure should not impact current or future joint appointments between UNCE and other programs. If they are not currently in place,

we recommend the establishment of memoranda of agreement with clear role statements for each current and future joint appointment.

- (10) **Marginalization of non-Ag mission of UNCE.** UNCE would maintain its budget, identity, and mission. It would not become part of CABNR and thus there should be little concern that the substantial and critical non-Ag component of its mission should be jeopardized.
- (11) **"Diluted responsibilities."** The concern was expressed that a single dean/director would not be as effective at promoting the missions of CABNR and UNCE because of the greater scope of responsibility. I do not see this as a particular concern as all deans/directors are responsible for the broad and varying components of their programs. Also, the proposed organizational structure includes three associate deans, one of whom would also serve as associate director for UNCE and another who would also serve as associate director for NAES.
- (12) **Enhanced collaboration.** A concern was expressed that the new organizational structure would not guarantee enhanced collaboration between UNCE and CABNR. This is certainly true. However, the search for a new Dean/Director presents a unique opportunity to hire an individual who is committed to enhanced collaboration. Both UNCE and CABNR faculty will be well represented on the search committee for the new dean.
- (13) **Faculty Senate representation.** I recommend that both CABNR and UNCE be allowed to maintain their current representation on the UNR Faculty Senate.

Update from Maurice Washington

Vanessa Dufresne

From: Diane Herron <Dherron@nnda.org>
Sent: Friday, March 29, 2013 1:23 PM
To: Vanessa Dufresne
Subject: Addition for the April 16th Commissioners meeting

Hi Vanessa,

I know it a little early but, wanted to request to have Maurice Washington placed on the agenda for the April 16th Storey County Commissioners meeting. Let me know if you need anything. Thank you.

Have a great day,

Diane Herron
Office Administrator

Northern Nevada Development Authority
E dherron@nnda.org
O 775.883.4413
www.nnda.org
www.improvethestateofyourbusiness.com



Resolution 13-372

Vanessa Dufresne

From: Tim Treffinger
Sent: Monday, April 08, 2013 11:43 AM
To: Pat Whitten; Vanessa Dufresne; Wendy Bacus
Subject: Agenda Item
Attachments: RESOLUTION 13372RESOLUTION TO RECOGNIZE APRIL 24.wpd

Could you please add the following item to the agenda for the County Commission Meeting on April 16, 2013.

1. DISCUSSION/POSSIBLE ACTION: Approve, Amend, Ignore, or Reject the Resolution to Recognize April 24, 2013 as "Denim Day" in support of victims of sexual violence.

Copy of resolution attached.

Thanks!

Tim Treffinger
Deputy District Attorney

RESOLUTION 13-372

RESOLUTION TO RECOGNIZE APRIL 24, 2013, AS "DENIM DAY."

WHEREAS, Nevada and other states have declared April as "Sexual Assault Awareness Month" and the Storey County Victim Services Unit (VSU) has declared April 24, 2013, as "Denim Day" and

WHEREAS, Both events are intended to draw attention to the fact that rape and sexual assault remain serious issues in our society; and

WHEREAS, Harmful attitudes about rape and sexual assault allow these crimes to persist and allow survivors to be re-victimized through victim-blaming attitudes and unresponsive government systems; and

WHEREAS, "Sexual Assault Awareness Month" and "Denim Day" are also intended as methods of calling attention to misconceptions and misinformation about rape and sexual assault, as well as the problem that many in our society remain uninformed about assault and forcible rape; and

WHEREAS, The importance of this issue is underlined by statistics indicating that approximately one-in-four women and one-in-ten men are raped in adulthood and the sexual assault victimization rate for youths under 18 years of age has been documented at one-in-four for girls and one-in-six for boys; and

WHEREAS, With proper education on the matter, there is compelling evidence that we can be successful in reducing incidents of this alarming and psychologically damaging crime; and

WHEREAS, The County Commission strongly supports the efforts of VSU to educate persons in our community about the true impact of rape and sexual assault in Nevada;

NOW, THEREFORE, be it resolved by the Board of County Commissioners of Storey County that April 24, 2013 be recognized as "Denim Day" in support of victims of sexual assault, and educating Storey County residents on the issue of sexual violence.

ADOPTED this 16th day of April, 2013 by the BOARD OF COMMISSIONERS OF STOREY COUNTY

By: _____

WILLIAM SJOVANGEN, Chairman

ATTEST:

Vanessa DuFresne
Clerk/Treasurer

Special Use Permit No. 2013-004 by the Nature Conservancy (McCarran) Applicant is requesting a special use permit in APN 004-092-62, 004-091-77 and 004-091-78 (approx. T20N, R22E, Sections 28, 39, 32 and 33 MDBM)(39° 33'38"N, 119°32'11"NAD) to alter portions of the existing Truckee River channel and abutting floodplain environment to facilitate flood management, water quality improvement, biodiversity and habitat improvement, noxious weed eradication and recreation.

Vanessa Dufresne

From: Donna Giboney
Sent: Friday, March 22, 2013 7:37 AM
To: Vanessa Dufresne
Subject: 4/2/13 Commissioner Agenda

Good Morning Vanessa,

The following was approved last night by the PC and is ready for the April 2nd Commissioners agenda:

DISCUSSION/FOR POSSIBLE ACTION: Special Use Permit No. 2013-004. By The Nature Conservancy (McCarran).

Applicant is requesting a Special Use Permit on APN's 004-092-62, 004-091-77, and 004-091-78 (approx. T20N, R22E, Sections 28, 29, 32, and 33 MDBM) (39° 33'38"N, 119°32'11" NAD) to alter portions of the existing Truckee River channel and abutting floodplain environment to facilitate flood management, water quality improvement, biodiversity and habitat improvement, noxious weed eradication, and recreation.

You have a wonderful day and weekend.

Donna Giboney

Administrative Specialist

Storey County

Community Development Department - Planning Division

110 Toll Road - P.O. Box 526

Virginia City, NV 89440

775-847-0966

dgiboney@storeycounty.org



STOREY COUNTY IS AN EQUAL OPPORTUNITY PROVIDER.

This email and any files transmitted with it are confidential and intended solely for the use of the individual or entity to whom they are addressed. If you are not the named addressee you should not disseminate, distribute or copy this e-

mail. Please notify the sender immediately by e-mail if you have received this e-mail by mistake and delete this e-mail from your system. If you are not the intended recipient you are notified that disclosing, copying, distributing or taking any action in reliance on the contents of this information is strictly prohibited.

Vanessa Dufresne

From: Austin Osborne
Sent: Friday, March 22, 2013 9:20 AM
To: Vanessa Dufresne
Cc: Donna Giboney; Pat Whitten; Dean Haymore; robert morris; Bill Maddox
Subject: Staff Report: Board 4/2/13 Meeting
Attachments: 13-004 Nature Conservancy (Board).pdf

Vanessa,

Please see attached SUP Nature Conservancy staff report for the April 2 (9:00 a.m.) Commissioners' packets. I understand that Donna has coordinated with you for agenda language and has already conducted necessary property notifications. Please feel free to inquire as needed.

Thank you,
Austin

Austin Osborne
Administrative Officer & Senior Planner
Storey County Courthouse
Box 176 Virginia City, NV 89440
Office: 775.847.0968
Cell: 775.291.4693
Fax: 775.847.0949
aosborne@storeycounty.org

Storey County is an Equal Opportunity Provider.

CONFIDENTIALITY DISCLAIMER:

This e-mail and any attachments are intended only for use by the addressee(s) named herein and may contain legally privileged and/or confidential information. If you are not the intended recipient, any dissemination, distribution or copying of this e-mail and any attachments is strictly prohibited. If you have received this e-mail in error, please immediately notify me and permanently delete the original and all copies and printouts of this e-mail and any attachments.



STOREY COUNTY

Board of County Commissioners

Staff Report

CASE NO. 2013-004

APPLICANT: The Nature Conservancy (Patti Bakker)

PROPERTY OWNER: NV Energy

APN NUMBER: APNs 004-092-62; 004-091-77; and 004-091-78

PROJECT LOCATION: T20N, R22E, Sections 28, 29, 32, and 33 MDBM.
(39° 33'38"N, 119°32'11" NAD)

REQUEST: Request to obtain a special use permit to alter portions of the existing Truckee River channel and abutting floodplain environment to facilitate flood management, water quality improvement, biodiversity and habitat enhancement, noxious weed eradication, and recreation opportunity.

MEETING LOCATION: Storey County Courthouse, District Courtroom
26 South "B" Street, Virginia City, Nevada

MEETING DATE: April 2, 2013

MEETING TIME: 9:00 AM

I. KEY TERMS & DEFINITIONS

1.1 Truckee River Flood Management Authority Project. This is a joint effort between the cities of Reno and Sparks, Washoe County, and the U.S. Army Corps of Engineers, and other stakeholders such as Storey County to develop a viable long-term solution to flooding that occurs near the banks of the Truckee River in the Truckee Meadows. It is composed of membership from the cities of Reno, Sparks, and Washoe County (the Flood Management Authority). Storey County is not a member of the FMA; however, through regional cooperation and its membership on the FMA's Technical Advisory Committee (TAC), the county is involved in planning processes pertaining to the Flood Project and potential impacts, both positive and negative, that could occur downstream in Storey County.

1.2 The Nature Conservancy. This is a worldwide organization that advances conservation and employs conservation projects with many partners, from individuals and governments to local nonprofits and corporations. In this special use permit request, The Nature Conservancy (applicant) has partnered with the Truckee River Flood Project FMA – from which it receives much of its funding – to engage in restoration efforts along portions the Truckee River in Storey and Washoe Counties, including the Pyramid Lake Paiute Tribal Lands.

II. BACKGROUND

2.1 Planning commission action. At its March 21, 2013, hearing, the planning commission heard testimony from the applicant, county staff, and the public. The applicant provided a Power Point presentation with diagrams, photos, and maps of the subject property and proposed project. Discussion between the commission, staff, and the applicant included project costs and funding, conservation easements and ownership, FEMA “no-rise” certification for flooding, long-term site maintenance, access, zoning and land use entitlements, and overall benefits and impacts to the site and surrounding area. There was no public comment or opposition presented regarding the proposal. County staff read into the record its recommended findings to be included with a motion for approval. The planning commission voted unanimously (7 votes with all present) to approve the project in accordance with stated findings as recommended by staff.

2.2 Requirement by code. This special use permit was submitted as required by SCC Sections 17.35.040(T) (Uses Subject to Special Use Permit) in the “I-2 Heavy Industrial Zone” and “NR Natural Resources Zone” which list natural resources projects including river and waterway restoration, wetland creation, water restoration, and recycling as being allowable with a special use permit.

2.3 Existing Conditions. Under the authority of the Flood Control Act of 1954, the U.S. Army Corps of Engineers altered the natural flow of the Truckee River between the Truckee Meadows and Pyramid Lake to reduce flooding in the Cities of Reno and Sparks. The river channel was straightened and widened in many sections. The straightening led to channel down-cutting and deepened the groundwater table. These man-made changes to the river environment disconnected the river from the riparian habitat and surrounding floodplains. Without access to groundwater, regeneration of native riparian vegetation had been impaired for decades, and invasive species have begun to dominate the riparian communities along the river’s edge (see application, p. 12, in Exhibit A herein).

2.4 Proposal Project Summary. The proposal is to restore and enhance water quality and riverine habitats of the Truckee River to a more natural condition. It includes approximately 87 acres of land, including the river. The proposed channel and floodplain restoration at the Tracy Project (Figures 3.1 and 3.2) will facilitate flood management, water quality, habitat for special-status species, biological productivity and diversity, noxious weed eradication, restoration of native plants, and recreation opportunities. Examples of projects by The Nature Conservancy along the Truckee River between Sparks and Pyramid Lake, including several in Storey County, is provided in pp. 12-13 of the submitted application and at their website*. The project proposed in this application is similar to those other projects.



Figure 2.1: The top image shows existing conditions at and around the Tracy Pond. The river channel is cut well below surrounding grade and its banks are fully vertical in most areas. Stream bank erosion (right) and river channeling is exacerbated by the inability of plant species to reach the groundwater table and establish themselves. The bottom image shows the banks of the Truckee River at the McCarran Ranch, located approximately two miles west, following restoration efforts by the applicant to this SUP.

*TNC's Mustang Ranch River Restoration Project:
(<http://www.nature.org/ourinitiatives/regions/northamerica/unitedstates/nevada/placesweprotect/truckee-river-project.xml>)

III. ANALYSIS

3.1 Land ownership and right. The project will take place within a Conservation Easement on land owned by NV Energy near the Tracy-Clark Power Plant in Storey County. The Conservation Easement provides that the subject property is reserved for natural resources conservation and projects similar to what is proposed under this SUP application. Industrial, commercial, and residential development is not allowed within this Easement.

3.2 Project description. The SUP Application provides details of the primary elements of the proposed river restoration project including phasing and long-term self-sustainability of the riverine environment. They are summarized below and detailed in the SUP Application pp. 1-10.

- Lowering the floodplain primarily along the south side of the Truckee River
- Excavating a new meandering channel within the new river floodplain
- Constructing riffles and grade control in the revised river channel
- Sequestering spoils along the new channel margins
- Transferring flow from the old channel into new revised channel
- Backfilling the old channel
- Constructing a berm along the northwestern flank of the project to prevent flood capture of the north abutting NV Energy cooling pond (to remain in place)
- Filling a small pond on the north side of the project
- Widening the channel downstream of the primary floodplain construction area
- Reinforcing the south bank in the widened area to reduce bank erosion currently occurring in the area
- Re-vegetating abutting riparian and wetland areas with a combination of natural recruitment and planting efforts

3.3 Best Management Practices. The SUP Application includes a detailed description (pp. 6-13) of Best Management Practices (BMPs) that will be employed in each phase of the project. BMPs include measures that are taken to protect air, water, and land quality at and surrounding the project site. A summary of the BMPs to be implemented in the project are as follows:

A. During Construction.

- Erosion control during construction, including straw wattles, silt fencing, etc.
- Protection of the river while conducting floodplain grading, including activities inside the river floodway
- Air and water quality monitoring
- Installation of surfaces appropriate for equipment egress and circulation
- Removal of site BMPs
- Rip and re-vegetate haul roads and other compacted areas

B. Post-Construction.

- Primary haul roads along both north and south sides of the river will be graveled with three-quarter inch road base rock

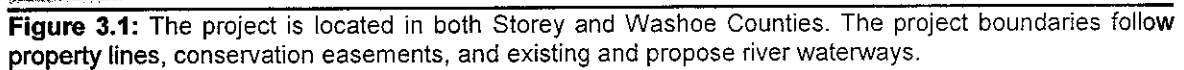
- Temporary construction roads of native surface will be ripped or disked to reduce compaction in preparation for re-vegetation efforts
- Re-vegetation/Air Quality/Erosion Treatments

3.4 Access. Primary access to the site will be from an existing NV Energy road along the north side of the Truckee River, which doubles as part of the Tahoe-Pyramid Trail System. It is a 10-foot wide compacted and graveled road suitable for light vehicles and heavy equipment. The road also includes several potential staging areas which double as potential sites for emergency vehicle staging areas. Secondary access is provided by a frontage road exiting Waltham Way. A stream crossing structure may also be installed to shorten hauling distances, prevent crossing the Union Pacific Railroad, and to reduce hauling costs. The crossing would be removed at project completion as required by the Nevada Division of Environmental Protection. Additional secondary access roads will be graded approximately as needed on adjacent floodplains; they will have native surfaces which may be watered and re-graded as necessary during construction.

3.5 Location of rock and gravel stockpiles. The SUP Application (pp. 3-4) provides details of estimated volumes of material stockpiles as well as anticipated cut-and-fill volumes. Potential flood events and erosion have been considered in the placement and design of material stockpiles and BMPs during project phases.

3.6 Equipment staging and washing areas. There will be a designated area for vehicle and equipment staging, maintenance (if necessary), and washing. The area will be located approximately 100' or more from the river and other natural water bodies. Washing vehicles periodically is important to reduce petroleum and noxious weed seeds from entering the river from project equipment. For this reason, the Nevada Division of Environmental Protection will closely monitor all vehicles entering the waterway.

3.7 Petroleum pipeline. The petroleum pipeline that runs along the Truckee River between California and Fallon, Nevada, is well marked with above-ground signage. Maps and other evidence on-file show the pipeline located far away from the subject property. The project is not expected to cause any potential impact on said pipeline.



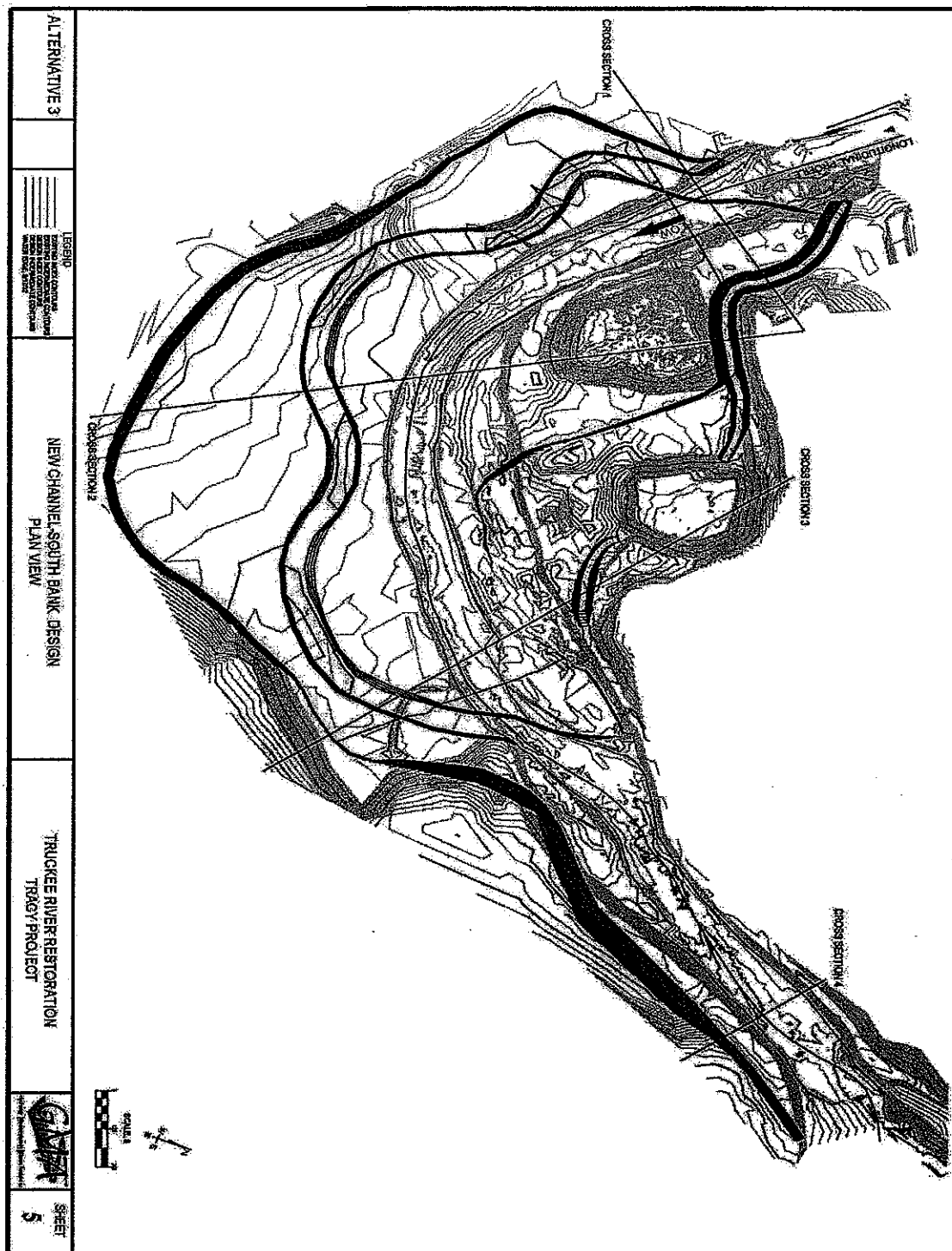


Figure 3.2: The project will result in substantial amendments to the existing river channel and its abutting terrestrial environments. The created river meanders will result in a long-term sustainable and naturally managed river banks and riparian environment. The proposal does not include modification to the existing Tracy Power Plant cooling pond.

IV. KEY ISSUES

4.1 Overhead power lines. The site includes overhead power lines and 16 of supporting structures (poles). The applicant submitted plans to their owner, NV Energy, for them to be relocated. Eight of those poles will be relocated; six will be moved to the south side of the property; and two will be installed along the new river channel after it is completed.

4.2 Site management. A site manager should be present on-site at all times during hours of operation to maintain a safe and orderly environment. The site manager should also have knowledge of and access to site facilities, access points, fire and emergency equipment, etc.

4.3 Emergency access. Egress points and routes leading to the site are confusing and not well marked. The Applicant should consult with the Storey County Fire Department to establish an emergency access plan that becomes part of the SUP.

4.4 Special environmental consideration. The proposed activities, including overall site and waterway work and management, will be closely monitored and regulated by the Nevada Division of Environmental Protection and applicable State and Federal regulations. The recommended conditions of the SUP serve to require compliance with the regulations and oversight and not become redundant or in conflict therewith.

4.5 No-rise. The project and the conditions it creates will not cause a rise in flood waters in the local area or upstream. It will comply with Flood Insurance Rate Map (FIRM) Base Flood Elevation (BFE) requirements of the Federal Emergency Management Agency (FEMA).

V. LAND USE COMPATIBILITY

The purpose and findings in SCC Section 17.35.010 (Purpose and Intent of the I-2 Heavy Industrial Zone) is to provide areas for the development of industrial uses that, by nature of their intensity, may be incompatible with other types of land use activities. Although zoned Industrial, the subject property is located in and adjacent to the exiting Truckee River channel and appears to cause no adverse impacts to adjacent industrial uses, unimproved property intended for industrial use, or other existing or future uses. A portion of the project is also zoned NR Natural Resources, which pursuant to SCC 17.76.010 (Purpose of the NR Zone) is to promote the preservation of land to conserve and enhance natural and scenic resources, archeological and cultural sites, primitive areas, watersheds, and flood-prone areas from unreasonable impairment.

VI. PUBLIC SAFETY

Signage should be installed at each port of entry and the project parameter as appropriate warning of potentially hazardous conditions. Appropriate barriers, such as temporary fencing, should surround potential hazardous conditions and all vehicles and equipment during periods of inactivity. The project area should be otherwise maintained in an orderly and safe manner.

VII. GENERAL ORDINANCE COMPLIANCE

This special use permit was submitted as required by the Storey County Zoning Ordinance (2012). The land is not located within the boundaries of the Tahoe-Reno Industrial Center, and, thus, it is not subject to the zoning regulations contained in the Storey County/Tahoe-Reno Industrial Center Development Agreement.

VIII. MASTER PLAN

The proposed special use permit conforms to the goals and objectives of the Storey County Master Plan including: protecting the quality of present and future water resources (Chapter 5, Goal 2); regulating use of watershed areas to minimize fire danger and prevent degradation (Chapter 5, Goal 4); assisting property owners and interested groups in controlling public use of critical watershed and riparian areas (Chapter 5, Objective 4.1); cooperating with property owners and interested groups in the county in maintaining wild horses and other grazing animals (Chapter 5, Objective 4.2); providing adequate park and recreation facilities for all residents of the county (Chapter 6, Goal 2); maintaining a healthy environment for all residents of the county (Chapter 9, Goal 1); and ensuring land use plans are compatible with the zoning map, master plan, and previous planning decisions (Chapter 9, Objective 1.1).

The following table shows the existing uses, zoning classifications, and master plan designations for the subject property and its abutting properties.

AREA DESCRIPTION			
	LAND USE	MASTER PLAN DESIGNATION	ZONING
SUBJECT LAND	Vacant. NV Energy power plant cooling ponds. Overhead power utilities.	Heavy Industrial including manufacturing, warehousing, logistics, and commercial uses (Note: Outside TRI Center) and riparian environmental restoration	I-2Heavy Industrial & NR Natural Resources
LAND TO NORTH	Vacant (Washoe County) Interstate 80	Rural, commercial, and industrial uses	General Rural
LAND TO SOUTH	Vacant. NV Energy overhead power utilities.	Heavy Industrial including manufacturing, warehousing, logistics, and commercial uses	I-2Heavy Industrial
LAND TO EAST	Warehouses, small-manufacturing, and trucking logistics companies	Heavy Industrial including manufacturing, warehousing, logistics, and commercial uses	I-2Heavy Industrial
LAND TO WEST	Mars pet food manufacturing facility. Mars pet food parking and vehicle staging areas.	Heavy Industrial including manufacturing, warehousing, logistics, and commercial uses	I-2 Heavy Industrial

IX. FINDINGS

9.1 Motion for Approval. The following are found to be factual regarding the proposed special use permit under the recommended conditions of approval shown in Section X of this report. A motion for approval should include these findings.

- A. SCC Sections 17.35.040(T) and 17.76.020(H) (Uses Subject to a Special Use Permit) require a special use permit for nature resource projects including river and waterway restoration, wetland creation, and recycling in the I-2 Heavy Industrial and NR Natural Resources Zones.
- B. The subject land is located in McCarran, Nevada, but is not located within the boundaries of the Tahoe-Reno Industrial Center; therefore, the proposed use is not subject to the restrictions or entitlements of the Development Agreement between Storey County and the Tahoe-Reno Industrial Center.
- C. The conditions of SUP No. 2013-004 will not conflict with the purpose, intent, and other specific requirements of the I-2 Heavy Industrial Zone and the NR Natural Resources Zone, in which the project is located.
- D. The proposed project and the final product will not conflict with or adversely impact surrounding existing land uses, future land uses, or land use entitlements therein under the I-2 Heavy Industrial Zone.
- E. The conditions under SUP No. 2013-004 are at least as stringent as and not in conflict the applicable federal, state, and county regulations. The minimum requirements under SCC Chapter 17.03 Administrative Provisions for special use permits are applied to the conditions of this SUP.
- F. The conditions of approval under SUP No. 2013-004 impose sufficient regulations on the proposed project to reasonably mitigate associated impacts on the surrounding environment and closest land uses.

9.2 Motion for Denial. Should a motion be made to deny the river restoration project, the following findings of fact with explanation why should be included in that motion:

- A. The proposed river restoration project or the final product thereof conflicts with one or more of the stated goals and objectives of the county master plan.
- B. The proposed river restoration project or the final product thereof, even with reasonable conditions and mitigation, will conflict with the purpose, intent, and other specific requirements set forth in the I-2 Heavy Industrial Zone or the NR Natural Resources Zone in which it will be located.
- C. The proposed river restoration project or the final product thereof, even with reasonable conditions and mitigation, will cause adverse impacts to surrounding existing land uses, future land uses, or land use entitlements therein under the I-2 Heavy Industrial Zone and/or the Development Agreement between Storey County and the Tahoe-Reno Industrial Center.

X. CONDITIONS OF APPROVAL

The following conditions are recommended by staff to be part of the approved special use permit. If approved, the conditions must be met to the satisfaction of each applicable county department, unless otherwise noted.

1. **Special uses.** Special Use Permit (SUP) No. 2013-004 is for the purpose of restoring and enhancing the water quality and riverine habitats of the Truckee River to a more natural condition by moving and widening the exiting river channel; creating meanders, oxbows, and other water bodies associated with the river environment; and removing existing vegetation and replacing it with native plant species. The SUP will be used pursuant to the advisory motion made by the planning commission and approval by the Board of Storey County Commissioners ("Board") on property located approximately at T20N, R22E, Sections 28, 29, 32, and 33 MDBM (39° 33'38"N, 119°32'11" NAD) (APNs 004-092-62; 004-091-77; and 004-091-78). The operation will comply with all of the requirements under this SUP and federal, state, and county regulations. Issuance of this SUP does not convey property rights of any sort or any exclusive privilege; nor does it authorize any injury to persons or property, any invasion of other private rights, or any infringement of state or local laws or regulations.
2. **Permits and expiration.** The Permit Holder must apply for all applicable building and grading permits within 24 months from the date of Board approval. This SUP will remain valid as long as the Permit Holder and facility complies with the terms of this SUP and federal, state, and county regulations. No construction or permitting for construction may commence prior to issuance of this SUP and granting of required grading permits.
3. **Transfer of rights.** This SUP will inure to the record owner of the Subject Property (NV Energy) and to the Permit Holder (The Nature Conservancy) and will run with the land. Any and all transfers of this SUP to other persons, agencies, or entities must be advised in writing by Certified Mail to the Community Development/Building Department at least 90 days prior to assignee taking over the project. The new owners/managers must sign and accept all conditions and requirements of this SUP.
4. **Indemnification and insurance.** The Permit Holder warrants that the future use of land will conform to federal, state, and county requirements; further, the Permit Holder warrants that continued and future use of the land shall so conform. The Permit Holder and property owner(s) agree to hold Storey County, its officers, and representatives harmless from the costs and responsibilities associated with any damage or liability, and any/all other claims now existing or which may occur as a result of this SUP. The Permit Holder must maintain satisfactory liability insurance for all aspects of this operation under this SUP for a minimum amount of \$1,000,000.00 (one million dollars) and provide proof thereof to Storey County prior securing rights to this SUP.
5. **Site supervision.** A staff manager must be present on the premises at all times during operations. That person must have knowledge of and immediate access to restrooms, fire suppression devices, First-Aid kits, and all locked gates. While on the premises, the on-

site manager must possess a cellular telephone with adequate signal to send and receive signals to and from Emergency 9-1-1 and Storey County Emergency Services direct-connect 775-847-0950. All staff using cellular phones must be directed by the Permit Holder or his designed to **dial Storey County Emergency Services Direct-Connect (775) 847-0950** (in lieu of 9-1-1) in case of emergency. Emergency 9-1-1 still is appropriate from land-line telephones.

6. **Fire suppression.** The Permit Holder must maintain fire extinguishers throughout the premises to the satisfaction of the Storey County Fire Department ("SCFD"). Each device must be identified by large and brightly colored (i.e., red and white) identification which includes the words "FIRE EXTINGUISHER". Additionally, the Permit Holder will be held responsible for assuring that all vehicles and heavy equipment (e.g., tractors and other mobile equipment) are equipped with a 5 pound minimum ABC rated fire extinguisher.
7. **Egress and circulation.** The Permit Holder must coordinate an emergency access plan with the SCFD prior to project commencement. All access and circulation routes must meet the requirements for hard-surfacing sufficient to support the weight of a fire engine as approved by the SCFD.
8. **Roadway approaches.** Egress points abutting Waltham Way or other paved county right-of-ways must include an approach sufficient in design to prevent mud and debris tracking from the site onto the public roadway. Any mud or debris tracked onto the roadway must be removed by the contractor immediately as allowable by the Nevada Division of Environmental Protection ("NDEP") and the National Environmental Policy Act (NEPA) regulations. Mud, sand, and debris must not be allowed to adversely impact existing drainage systems.
9. **Overhead power lines.** Several power utility lines (approximately 16) cross the site. The Permit Holder must have the lines removed or located with permission of their owner(s) or exercise due care to protect them from heavy equipment working in the area.
10. **Signage.** A legible sign must be placed at entry of the premises during project phases stating the name of company/organization responsible for construction, street address and number of the project site, and contact phone number(s). This sign must be at least 2 feet by 3 feet in size. Appropriate signage must be installed on and around the premises stating rules for entry and circulation (e.g., no trespassing, travel permitted only on designated pathways, etc.). The Storey County Public Works Director may require that temporary signs (e.g., sandwich-boards) indicating crossing truck traffic (i.e., "Truck Crossing") be installed along the east and west bound lanes of Waltham Way near egress.
11. **Restrooms.** The Permit Holder must provide properly maintained restroom facilities (porta-potties) and wash stations adequate to meet the sanitation needs of persons on the premises during project construction phases. The number of restroom facilities provided during this period is pursuant the projected number persons on the premises at any given

time, as recommended by the Portable Sanitation Association International (PSAI). Each restroom must include a properly maintained alcohol-based gel hand sanitizer dispenser.

12. **Cultural resources plan.** A comprehensive archeological, historic, and cultural resources study must be performed on the premises as required and directed by the Nevada State Department of Cultural Affairs at the expense of the Permit Holder in order to determine the presence of any paleontological resources (historic or prehistoric site or artifacts) that may be located on the premises. Should any prehistoric or historic remains/artifacts be discovered during development or excavation, work must temporarily be halted at the specific site and the Storey County Community Development Department must be notified in order to evaluate the site and, if deemed necessary, to record and photograph the site in question. The period of temporary delay will be limited to a minimum of two working days from the date of notification, unless it is a significant find and it is deemed necessary to provide more time to evaluate and protect historical remains or artifacts.
13. **No-rise.** The project and the conditions it creates must comply with the Federal Insurance Rate Map (FIRM) Base Flood Elevation (BFE) requirements (e.g., “No Rise Certification”) of the Federal Emergency Management Agency (FEMA).
14. **Release of species.** No species listed as “threatened” or “endangered” pursuant to the U.S. Endangered Species Act may be brought to or released on or near the subject property. Species include, but are not limited to, Sage Grouse.
15. **Environmental controls.** The Permit Holder must obtain an NDEP Dust Control Permit and furnish Storey County copies of the permit. All non-vegetated surfaces must be appropriately and consistently treated to mitigate fugitive dust and sand. Best Management Practices (BMPs) must be employed throughout the entire project premises and egress points. At no time may secondary effluent be applied to surfaces within the premises, including for dust control, vehicle and equipment washing, and other activities. BMPs and other environmental controls in and around the Truckee River and the project site must comply with the detailed plans contained in SUP Application No. 2013-004, unless required otherwise by a federal or state agency. Trees, shrubs, and other vegetation and ground surfaces must be preserved to the extent feasible.
16. **Vehicle and equipment storage.** Inactive vehicles and equipment must be stored within a protected staging areas located a minimum of 100 feet from natural water bodies. To minimize the potential for discharge of fuel spills and other pollutants into the river, the staging area must be located and graded such as to contain and prevent potential contaminants from entering natural water bodies.
17. **Sales tax reporting.** All material and equipment purchased for the project must as possible be received in Storey County and the value reported as “County-of-Delivery” on the Nevada Department of Taxation Form TPI-02.01 “Combined Sales and Use Tax Return”. The Permit Holder must also report the value for all materials and equipment (personal and rented) “used” on this project as “Use Tax” on TPI-02.01 or TPI-02.02.

18. **Spillage.** Any hydrocarbon or environmental spill incidents involving 25 gallons or more of any petroleum product (e.g., gasoline, diesel, and hydraulic fluid) or 3 or more cyds of contaminated material, or any presence of such material on or in ground/surface water must be reported immediately to Storey County Emergency Services (775) 847-0950 (in lieu of 9-1-1). Additionally, under Nevada State Law, the incident must be immediately reported to the Local Emergency Planning Committee (Emergency Management Director), Storey County Community Development Department, and the NDEP. The applicant must comply with the NDEP's clean-up requirements and provide said County departments a copy of NDEP's completion of remediation. All hazardous materials incident clean-up and response costs are borne by the Permit Holder as part of this SUP.

XI. POWER OF THE BOARD AND PLANNING COMMISSION

At the conclusion of the hearing, the planning commission must take such action thereon as it deems warranted under the circumstances and shall announce and record its action by formal resolution, and such resolution shall recite the findings of the planning commission upon which it bases its decision. Conditions of approval must be included in the resolution. The resolution will be sent to the Board of County Commissioners at the next appropriate regularly scheduled meeting. The decision of the planning commission in the matter of granting, granting with conditions, or denying the SUP will be advisory only to the Board of County Commissioners.

XII. PROPOSED MOTIONS

This section contains 2 motions from which to choose. The motion for approval is recommended by staff in accordance with Findings under Subsection 9.1. Those Findings should be made part of that motion. Motion 2 for denial may be made and that motion should cite one or more of the Findings shown in Subsection 9.2. Other Findings of fact determined appropriate by the Board should be made part of either motion.

- A. **Recommended motion.** Based on Findings of Fact shown in Subsection 9.1, the conditions of approval shown in Section X of this report, and the motion for approval by the planning commission, the Board approves SUP Application No. 2013-004 to amend portions of the Truckee River channel and abutting floodplain areas for the purpose stated forth in the SUP Application.

Summary: Approve river restoration project as proposed

- B. **Alternative motion.** Based on Findings of Fact shown in Subsection 9.2 and against the recommendation by staff and the planning commission, the Board denies SUP Application No. 2013-004 to alter portions of the Truckee River channel and abutting floodplain areas for the purpose stated forth in the submitted SUP Application.

Summary: Deny the application for river restoration project

Prepared by Austin Osborne, Senior Planner

Exhibit A: SUP Application

Exhibit A: SUP Application No. 2013-004 Project Descriptions

**Storey County Special Use Permit Application
Truckee River Restoration Program- Tracy Project**

1. Project or Request Description

a. Summary

The primary purpose of the project is to restore and enhance the water quality and riverine habitats of the Truckee River to a more natural condition by restoring the physical and biological functions of a self-sustaining aquatic ecosystem. The proposed channel and floodplain restoration at the Tracy Project site will create a variety of benefits in terms of flood management, water quality, habitat for special-status species, biological productivity and diversity, noxious weed eradication, restoration of native plants, and recreation opportunities.

The project proposes to lower the existing (abandoned) floodplain in order to reconnect it with the Truckee River which will be relocated into a smaller more sinuous channel. 1,750 feet of old channel will be filled while 2,900 feet of new channel will be created within the new floodplain resulting in 1,150 feet of additional channel. A large berm along the north side will contain flood flows and the channel will be widened along the downstream end of the project to provide additional channel capacity and reduce existing bank erosion and slope failure. Swales and scour channels will be excavated into the designed floodplain surface to provide topographic and hydrologic complexity and to increase flood water storage potential.

Primary elements of this project include:

- Lower the floodplain primarily along the south side of the Truckee River.
- Excavate a new meandering channel within the new floodplain.
- Construction of riffles and a grade control in the new channel.
- Sequester spoils along channel margins.
- Transfer of flow from old channel into new channel.
- Backfill the old channel.
- Construction of a berm along the northwestern flank of the project to prevent flood capture of the large cooling pond.
- Fill a small pond on the north side of the project.
- Widen the channel downstream of the primary floodplain construction area.
- Reinforce the south bank in the widened area to reduce bank erosion currently occurring in that area.
- Revegetation of riparian and wetland areas with a combination of natural recruitment and The Nature Conservancy (TNC) planting efforts.

b. Construction Sequence and Best Management Practices (BMPs)

Below is a summary of construction activities listed in the sequence suggested to minimize environmental impacts. The exact sequence may vary as long as appropriate BMP measures are incorporated prior to disturbance.

1. Pre-construction Activities

1. Establish primary site access route and staging/equipment washing areas along existing NV Energy road, and allocate stockpiling areas.
2. Install wire-backed silt fencing or straw wattle (fiber rolls) for compliance with BMPs.
3. Stakeout and fence existing riparian save areas.
4. Grade unimproved portion of main haul roads and water and re-grade as necessary.
5. Install type II turbidity curtain along north bank to minimize impacts during floodplain grading.
6. Clear and grub north side floodplain, haul away debris.

2. Construction of Floodplains and Berms

1. Perform daily water and air quality monitoring procedures.
2. Establish stockpile locations, deliver berm rock slope protection (RSP) and channel crossing materials.
3. Spray rock stockpiles as prescribed for BMPs and use skeleton bucket to avoid scooping fines when loading.
4. Commence grading north side floodplain.
5. Fill pond and construct berm.
6. Install Type III turbidity curtain downstream of 102 Pond.
7. Construct gravel access pad to crossing location.
8. Build stream crossing structure and build access pad on south side contingent upon NDEP input and approval.
9. Install type II turbidity curtain along south bank.
10. Stakeout and fence riparian save areas.
11. Begin clearing and grubbing south floodplain and downstream channel expansion areas.
12. Begin excavation of south floodplain and downstream channel expansion areas.
13. Spoil ~59,000 CY near the old channel for eventual fill.
14. Spoil remainder in the sequestration areas indicated on the plans.
15. Install straw wattles or silt fencing as necessary.
16. Frequently inspect erosion BMPs and repair as necessary.

3. Construction of South Floodplain, Channel Widening and New Channel

1. Install gravel cobble plugs at the upstream and downstream interface of design channel and new channel to isolate the two channels.
2. Excavate the new channel as per the plans.
3. Over excavate riffles and groins.
4. Place prescribed materials at riffles, point bars and groins.
5. Bring design channel to finish grade.
6. Excavate trench for grade control structure.
7. Build grade control structure and backfill to floodplain grade.
8. Construct south side berm and place RSP on both slopes as prescribed.
9. Excavate swales and bring floodplain to finish grade.

4. Redirecting the Truckee River into the Design Channel

1. Spread the previously placed cobble plugs at both ends to allow flow into the design channel.
2. Minimize the duration of exposure of materials and equipment to the active river.
3. Move equipment back to north side and commence building cutover structure, placing coarser materials first, gradually building a coffer dam.
4. Place finer material to fill interstitial voids and divert flow and finish the structure to floodplain grade.
5. Once flow has switched into the design channel, construct a cobble plug at downstream end of old channel.
6. Backfill old channel with previously spoiled materials.
7. Treat banks near the cutover with RSP as prescribed.
8. Excavate north side and scour channels.

5. Post-construction Activities

1. Finish grading of excess fill materials in the upland spoils locations. These features will be re-vegetated for stabilization as soon after construction as conditions allow.
2. Remove stockpile and vegetation BMPs (e.g. welded wire-backed silt fences and hurricane fences).
3. Remove the temporary cobble access pads and revegetate the impacted areas.
4. Remove the site access BMPs.
5. Rip and revegetate haul roads and other compacted areas.

c. Detailed Pre-construction Activities and BMPs

Phased construction will combine various activities and BMPs to minimize surface water contact with exposed cuts and fills, and reduce or prevent associated impacts. The following Pre-construction, construction and Post-construction BMPs will be implemented.

1. Construction Access

Primary access to the site is along the established NV Energy road along the north side of the river, which doubles as part of the Tahoe Pyramid Trail System. It is a 10 foot wide compacted and graveled roadbed suitable for heavy equipment. Several potential staging areas exist along this road. The south side of the river may be accessed by the frontage road exiting Waltham Way, though this route is much longer. A stream crossing structure may be installed to shorten hauling distance, prevent crossing the railroad and reduce hauling costs. The decision to construct a stream crossing structure will be made closer to the beginning of actual construction in conjunction with NDEP input and approval. Additional secondary access roads will be graded approximately as needed on floodplains and will have a native surface which can be watered and re-graded as necessary during construction.

2. Location of Rock and Gravel Stockpiles

Gravel and cobble can be end-dumped and loaded in areas with good turnaround access along the north side of the river. Riprap materials should be stored near the placement sites. Along the south side of the river, in the channel expansion area, a storage location will be developed during the grading process. All materials to be placed in the river will be washed by spraying the stockpiles with the water trucks. Washing will be repeated as piles are depleted.

3. All Construction Volumes and Areas

Table 1. Estimated construction materials volumes for Truckee River near Tracy

Design Item	Estimated Volumes (CY)
Road Treatment Gravel	500
Point Bar Fill Gravel Placement	2,500
Riffle Fill Gravel Placement	2,500
Gravel Purchase/Hauling	5,500
Stream Crossing Cobble	600
Groin Cobble	800
Riffle Fill Cobble Placement	2,500
Cobble Purchase/Hauling	3,900
N Cooling Pond Berm Construction (locally screened soils)	12,000
S Cooling Pond Berm Construction (locally screened soils)	19,000
Material Screening	31,000
Riprap -- South side lower benches	17,000
Riprap -- North side berm	21,000
1-2 ton Boulders -- Grade Control Structure	700
Rip-Rap -- Channel Cut-Off Structure	5,200
Riprap Purchase/Hauling	43,900

Table 2. Computed cut and fill volumes

Area	Cubic Yards
Entire Project	Total Cut -336,000
	Total Fill 186,500
	Net cut -149,500
North Side Existing Channel	Pond Fill 66,000
	Berm Fill 13,000
	Total Cut -45,400
	Net Fill 33,600
South Side Existing Channel	Total Cut -235,200
	Total Fill 28,000
	Net cut -207,200
Channel Widening Near Power Plant	Total Cut -55,400
	Total Fill 19,500
	Net cut -35,900
River Channels	Old Channel Fill 60,000
	Design Channel Cut -114,000
	Net cut -54,000

4. Staging Areas and Equipment Wash Sites

The staging areas will double as equipment wash sites. Parking surfaces will be graded to contain runoff and will be covered with gravel. Straw wattles (fiber rolls) will be staked along perimeters to further facilitate containment.

5. Establishment of Turbidity Curtains

To minimize turbidity impacts during floodplain grading, a Type II heavy duty turbidity curtain (Figure1) will be installed parallel to the Truckee River stream bank. If both floodplains are graded simultaneously, the Type II turbidity curtains will be staked along both banks. Prior to diverting the Truckee River into the newly excavated channel, a floating Type III heavy duty turbidity curtain will be installed across the channel downstream of the site at the 102 pond approximately 9,000 feet downstream of the project.

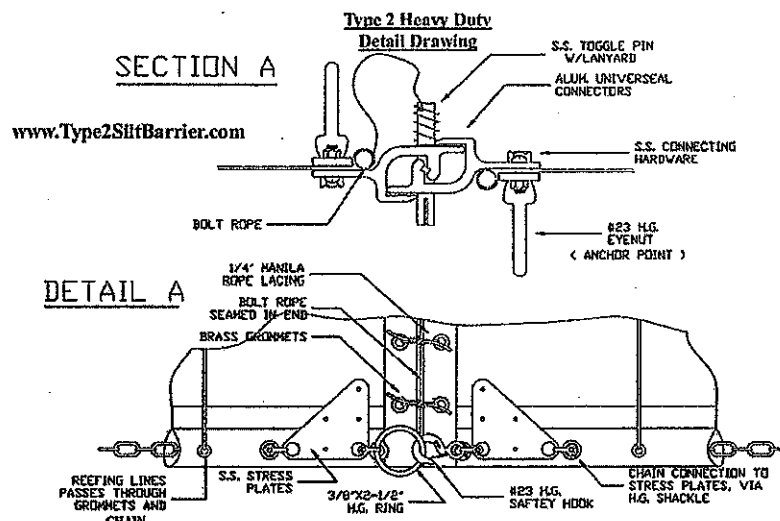


Figure 1. Detail of Type II heavy duty turbidity curtain, courtesy Granite Environmental

6. Sensitive Areas

No disturbance will take place outside the project boundaries detailed in the project plans. Further, numerous riparian save areas exist within the project footprint and these must be fenced, flagged and avoided as delineated in final plans.

d. Detailed Description of Construction and BMPs

1. Water and Air Quality Monitoring

Background turbidity samples will be collected twice per day upstream of all planned activities, above the upstream diversion structure. Downstream samples will be collected below the 102 site which is located 9,000 feet below the downstream boundary of the project. Samples will be collected at the downstream site before, during and after construction activities each day at a sampling frequency of approximately once per hour.

Air quality will be qualitatively monitored by the contractor during all ground disturbance activities. Water trucks will be deployed as necessary to keep the production of air borne particulates to a minimum.

2. Floodplain Grading

The starting location and progression of floodplain grading will be chosen by the contractor. Excavators or scrapers will likely be used to lower the floodplains to the design grade. When gravel or cobble lenses are encountered, these materials should be screened and separated for potential use in cobble blankets. If chosen as the best option, the stream crossing structure will be constructed at this point.

3. Excavation of Swales, Wetlands and Scour Channels

After the floodplain is lowered to the designed grade, new features will be cut into the landscape as detailed in the (final) plan and under supervision from TNC staff. The primary elements of such features are to provide seasonal hydrologic connectivity to water in the main river channel: wetlands will be nearly always wet; swales will be wet during spring runoff; and scour channels will flow during flood events, serving to slowly return water from floodplains back to the main channel.

4. Excavation of New Channel within Lowered Floodplain

Riffle and bar materials will be stockpiled near the new channel location and excavation will proceed from downstream to upstream. Both ends of the design channel will be plugged with cobble to prevent flow from entering the new channel, or effluent from entering the old channel, during construction. Riffles and bars must be over excavated to allow for placement of cobbles and gravels to achieve the final grade. The notch for the cross valley grade control should be excavated at this time as well.

5. Placement of Spoils

Some spoiled material will be screened and used to construct berms and some will be sequestered at the toes of slopes along the project boundary. Additional material (approximately 59,000 CY) will be used to fill the old channel and should be stockpiled adjacent to the channel as the floodplain grading takes place. Lower quality (e.g. high organic content) areas should be cleared and grubbed prior to excavation and these materials should not be used in the berms. Stockpiling of spoils will occur near the following areas:

- Existing channel (for back filling after the river is diverted into the excavated channel)

7. Construction of a Crossing Structure

A stream crossing structure may be installed to shorten hauling distance, prevent crossing the railroad and reduce hauling costs. The decision to construct a stream crossing structure will be made closer to the beginning of actual construction in conjunction with NDEP input and approval. Potential crossings may consist of either a culvert crossing or bridge crossing (e.g. a railroad flat car). Examples of crossing designs are included in Figure 3. Two points: (1) the designs use washed spawning gravel for backfill around the culverts, and (2) road base placement over a geotextile fabric layer prevents mixing of the gravels and the road base.

It may be necessary for the Contractor to provide designs and obtain necessary permits for stream crossing. Each crossing will need to provide adequate fish passage as per the most recent version of the National Marine Fisheries (NMFS) Guidelines for Fish Passage at Stream Crossings. Furthermore, each crossing will need to be designed to pass potential high flows from early season precipitation. It should be noted, the longer the crossings remain in place the higher the potential flows the crossing will need to accommodate. Mean daily flows range from 300-500 cfs for August-October, though October peaks of over 1,500 cfs have occurred twice in the 85 year period of record (USGS 10350000).

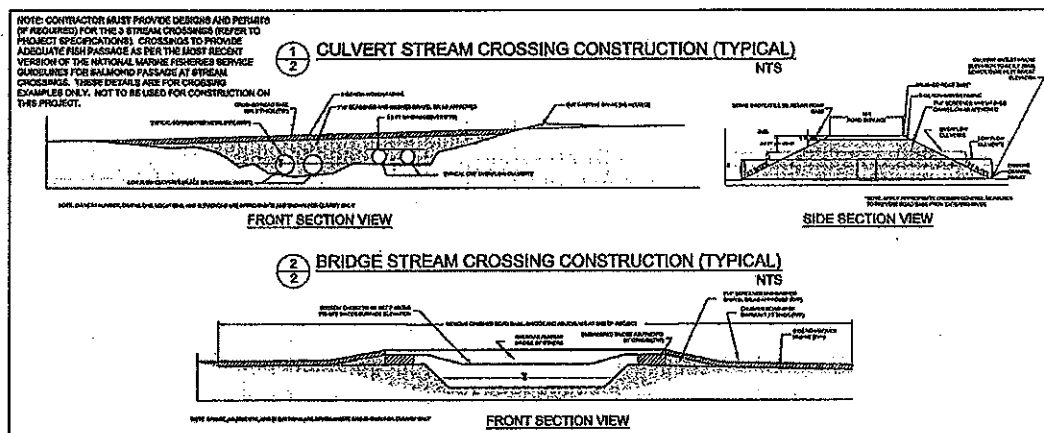


Figure 3. Stream crossing detail

8. Transferring Flow into New Channel

After all work on the south side floodplain is finished and the design channel is excavated and rocked, the full flow of the river can be turned in to the design channel.

Cut-Over Dike Design and Construction Procedure

After the floodplain is lowered on the north side of the cutover location, approximately 5,200 CY of 1-2 ton boulders will be placed along the north side of the existing channel, ready for grading into the river to force water into the new channel. The desired form is described in Figure 4 and will be constructed along the alignment provided in the staking. Grading will proceed according to Detail 1. An excavator will place the boulders sequentially, constructing a surface approximately 15 feet wide to drive across (the height will be determined in the field, we estimate 6 feet here). Once the base structure of 1-2 ton

boulders diverts most of the flow into the design channel, and most of the remaining flow has exited the downstream end of the old channel, a cobble plug of screened floodplain materials will be constructed across the downstream end of the existing channel at the tie-back. The downstream side slope of this plug should be no steeper than a 5:1 and will follow the alignment in Figure 4, providing a backwater feature. This plug will provide: a retaining structure for subsequent backfilling of the old channel; reduce fine sediment delivery from remnant flows in the old channel; will reduce rivers-flow following diversion; and will provide a coarsened surface to prevent recapture. Completion of the cutover structure proceeds with: backfilling with spoils; layering rock slope protection (RSP) fabric and backing (Figure 4) the addition of RSP boulders (½-1 ton), graded into the new bank at a 2:1 slope.

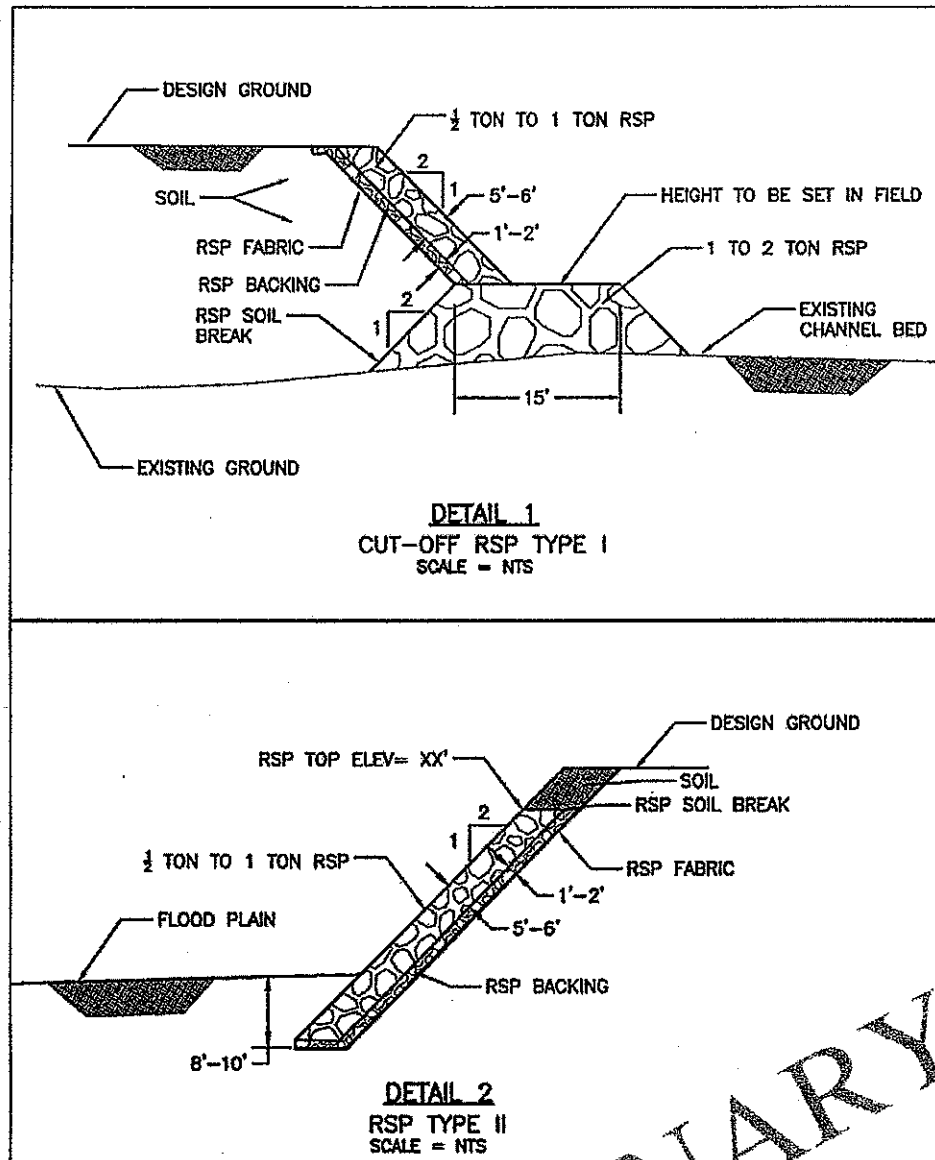


Figure 4. Rock slope protection details

9. Filling and Grading the Old Channel

After flow has been diverted into the new channel, backfilling of the old channel (using previously stockpiled 59,000 CY of floodplain spoils) can begin. Fill elevation in the old channel will match the floodplain elevations along either side.

10. Post Grading Treatment

TNC assumes responsibility for post grading soil treatments to reduce short term erosion. Such treatments may include; pole plantings, containerized seedlings, direct or water jetted seeding. Mulch can be added to facilitate water retention, reduce erosion and inhibit colonization by undesired species. Given the extremely windy conditions which often occur in the region, a tackifier should be added to all sprayed mulching efforts.

11. Channel Widening Downstream of the South Constructed Floodplain

Below the design channel tie-in, floodplain grading will continue through the valley constriction (south bank) to provide additional cross sectional area for flood water.

Grading of the South Bank

Some save areas along the edge of water will be fenced and avoided. Grading will likely be accomplished with excavators from the top of the bank, transferring spoils to trucks for the short haul to the disposal area to the east. Grading will create an inset bench with a bank along the river and a rear bank which rises to the haul road.

Armoring of the South Bank

Both banks shall be armored as in Detail 2, Figure 4. The riverbank rip rap shall be stacked in an excavated trench to an elevation that is 8-10 feet below the adjacent streambed. The rear bank shall be protected in similar fashion with the RSP placed in a trench 8-10 feet below the inset floodplain grade.

12. Construction of Berm along Northern Boundary

Floodplain materials from the northern grading area will be screened to a standard to be determined by the project geotechnical engineer. The berm will be compacted to the engineer's specifications and will be protected along both sides as in Detail 2, Figure 4.

13. Erosion Prevention Treatments during Construction

All large disturbance areas will be fenced with wire backed silt fencing which provides extra strength in windy areas. Spacing of steel posts will not exceed 8 feet. Wire fencing will be installed on the downhill side of the filter fabric, between the fabric and the posts and the fabric will be anchored in a 12 inch deep ditch (Nevada BMP Guide, June 2008). Some areas (e.g. long slopes along floodplain boundaries and spoils sequestration areas) may be protected with rows of straw wattles (fiber rolls), staked in place along level contours. Rolls should be keyed in to the ground surface 2-4 inches and staked at least every 4 feet with the space between rows not to exceed 20 feet (Nevada BMP Guide, June 2008).

e. Detailed Description of Post-construction and BMPs

1. Road Surfaces Treatments

Primary haul roads along both north and south sides of the river will be graveled with ¾ inch road base rock. Temporary construction roads of native surface will be ripped or disked to reduce compaction in preparation for TNC re-vegetation efforts.

2. Re-vegetation/Air Quality/Erosion Treatments

Silt fencing and fiber rolls located in non-flood prone areas should remain on site for at least two years until vegetation becomes established. BMP's located along the river's edge and on the lowest floodplain surfaces should be removed following construction. Under TNC direction a spray mulch/tackifier mixture will be applied to exposed soils to reduce wind-blown soils. Weed free straw mulch may also be applied.

3. Riparian, Wetland, Upland Vegetation Restoration

In riparian and wetland areas re-vegetation will occur as a combination of natural recruitment and TNC planting efforts. Floodplain and upland plantings will need to be watered for the first few years following construction as in other TNC restoration projects such as Mustang and 102. Removal of invasive species is an anticipated component of TNC's Vegetation Restoration Plan.

f. Type of Equipment to be Used

The excavation of the meanders, the filling of the old channel, the placement of riffle rock, and other activities at the site will require the hiring of an excavation crew. The equipment listed below, or its equivalent, is expected to be used throughout the site.

Cat 330 Excavator
Cat 973 Loader
Cat D400
Cat D7 Dozer
Cat 14G Grader
4000 gal water truck

g. Township, Range and Section(s), Latitude and Longitude

Tracy Project site occurs in the Patrick, Nevada 7.5-minute USGS quadrangle.

Township, Range, and sections of the project:

T20N, R22E, and Sections 28, 29, 32, and 33 Mount Diablo Baseline and Meridian (MDBM)

Latitude and Longitude coordinates of the project:

39°33'38"N, 119°32'11" referenced to North American Datum

2. Detailed Description/Justification

The following is an excerpt from the Environmental Assessment "Environmental Reclamation: Managing Water in the West" prepared by the U.S. Department of the Interior - Bureau of Reclamation for the Lower Truckee River Projects.

1.2 Background

Over the past century, the lower Truckee River downstream from Vista has suffered from many human-caused changes, which have greatly altered the ecological integrity and functioning of the river. Truckee River flows are regulated by a number of agreements, decrees, and river operating requirements.

Under the authority of the Flood Control Act of 1954, the U.S. Army Corps of Engineers completed major flood control work on the Truckee River from 1959 to 1963 (State of Nevada 1997). The Truckee River and Tributaries Project was initiated by the ACOE to provide flood protection for the cities of Reno and Sparks. The ACOE modified the Truckee River by constructing low levees and making channel modifications between Truckee Meadows and Pyramid Lake. The river channel was straightened and widened in many sections. The straightening led to channel down cutting along the lower Truckee River and depression of the groundwater table. The lowered groundwater depth has disconnected the river from the riparian habitat and surrounding floodplains. Without access to groundwater, regeneration of native riparian vegetation has been impaired for decades, and invasive species have begun to dominate the riparian communities along the river's edge.

Land use practices along the Truckee River have altered the flow regimes and caused the condition of riparian vegetation to decline, resulting in a significant reduction of important habitat for birds, mammals, reptiles, and amphibians. Urban growth and development in the cities of Reno and Sparks have increased the amount of impervious surfaces, affecting water quality and the extent and timing of flooding.

Since 2003, TNC and its partner agencies have demonstrated river restoration techniques on the lower Truckee River through two projects at TNC's 305-acre McCarran Ranch, the Lockwood site, the lower Mustang Ranch site, and the 102 Ranch site. The three sites proposed for restoration in this EA are within the same reach of the lower Truckee River as the completed restoration sites. The restoration activities at McCarran Ranch included the creation of a new river meander; approximately one mile of new channel and riffle construction; revegetation of approximately 120 acres; creation of wetlands and ponds, including oxbow wetlands; and a variety of wildlife nesting, cover, and shelter improvements. The constructed riffles raised the water surface level and promoted more frequent overbank flooding within the project areas. The localized overbank flooding of these uninhabited floodplain areas improved soil fertility and ecological productivity, while attenuating downstream flooding.

These river and riparian restoration measures are correcting the undesirable side effects of channelization and river entrenchment associated with past flood control efforts occurring in the 1960s, while retaining the benefits of flood flow attenuation. Restoration at the McCarran Ranch sites is resulting in the recovery of the groundwater table in the project area, increased populations, and survivorship of native plants, and increased fish and native bird populations. The decreased channel width promotes improved hydraulic connection between the river channel and its floodplain to better support wetland habitat.

1.3 Purpose of and Need for the Proposed Action

The primary purpose of the project is to contribute to the ecological restoration of the lower Truckee River. Overall, the project is intended to help restore basic physical and biological functions to a more natural condition so that the ecological systems and native organisms can depend on those functions. Generally, the restoration project would involve the creation of new areas of aquatic and terrestrial habitat, including river channel realignment and modifications, wetlands, and areas of native vegetation,

for the purposes of restoring the degraded ecosystem to a more natural condition. Monitoring results support the effectiveness of TNC's restoration projects since 2003 and the need for continued, well-designed restoration projects at high priority sites on the lower Truckee River.

The Upper Mustang Ranch, West McCarran and Tracy sites were selected by TNC, Reclamation, and other cooperating agencies in order to restore the river channel, wetlands, and riparian forest and to undo the damage of the human-caused changes, including the effects of past flood protection channelization at those locations. The proposed channel-and-floodplain restoration work to be implemented at the three sites would create a variety of benefits in terms of long-term floodwater flow attenuation, water quality, habitats for native plants and animals including special-status species, biological productivity and diversity, noxious weed reduction and control, and restoration of native species. The proposed projects would continue TNC's program of restoration on key reaches of the lower Truckee River and provide linkage and continuity with the previously restored sites.

The decision to propose the current three sites, as well as previous projects for restoration, was based in part on their relatively high scores in a report prepared by Otis Bay Ecological Consultants (Otis Bay Ecological Consultants 2007) for the U.S. Army Corps of Engineers. The report includes a ranking of the ecological restoration potential of 20 sites along the lower Truckee River based on field and aerial observations. The criteria included flow regime, average floodplain width and potential for floodplain expansion, riparian forest and potential for recovery, existing aquatic habitat diversity and potential to increase hydraulic habitat diversity, encroachments into the channel and floodplain, existing entrenchment, floodplain reconnection potential, and connection to natural features.

1.3.1 Tracy Power Plant

The Tracy Power Plant reach is characterized by its deeply incised channel, channel instability, a disconnected floodplain, and backwater effects from several rock weirs. In spite of some infrastructure constraints, the Tracy reach has considerable potential to restore a functional floodplain, reduce channel instability, and create high quality habitat. The Tracy reach was identified as a priority for restoration on the lower Truckee River and is available for restoration implementation. The purpose and need for action in the Tracy reach is the opportunity to apply available funding to a high priority restoration site on private land that would result in multiple long-term environmental benefits to the lower Truckee River and Pyramid Lake. Restoration of the Tracy site would also provide habitat continuity with the two miles of river previously restored in the 102 Ranch project.